



**UNIFIED COUNCIL**

An ISO 9001:2008 Certified Organisation



**STATE LEVEL SCIENCE TALENT SEARCH EXAMINATION - CODE: US737 (UPDATED)**

**SOLUTIONS FOR CLASS : 6**

**MATHEMATICS**

1. (D)  $69.725 - 69.45$   
 $= 0.275$

2. (D) 587315 is written as 590000 after rounded off to the nearest ten thousands.

3. (D)  $47 - [(2 + 3) - 3 \{4 - 3(7 - \overline{4 - 3})\}]$   
 $47 - [5 - 3 \{4 - 3(7 - 1)\}]$   
 $47 - [5 - 3 \{4 - 3(6)\}]$   
 $47 - [5 - 3\{4 - 18\}]$   
 $47 - [5 - 3\{-14\}]$   
 $47 - [5 + 42]$   
 $47 - 47 = 0$

4. (B)  $\frac{299}{500} = \frac{2.99}{5} \approx \frac{3}{5}$

5. (A)  $x - 5 = \text{Even number.}$

First odd number after  $x - 5 = x - 5 + 1 = x - 4$

Second odd number after  $x - 5 = x - 2$


Third odd number after  $x - 5 = x$ .

6. (A) One digit prime numbers = 2, 3, 5, 7

Possible four digits odd numbers greater than 5000

= 5237, 5327, 5723, 5273, 7235, 7325, 7523, 7253.

$\therefore$  No. of possibilities = 8

7. (B) Total no. of triangles of  size = 8  
 Total no. of shaded triangle = 2.

$\therefore$  Fraction of shaded triangle =  $\frac{2}{8} = \frac{1}{4}$

8. (B) Take, length =  $l$   
 breadth =  $b$

$\therefore$  Perimeter =  $2(l + b) \rightarrow$  ①

After making  $l, b$  double,

New length =  $2l$

New breadth =  $2b$

$\therefore$  New perimeter =  $2(2l + 2b)$   
 $= 2[2(l + b)]$   
 $= 2[\text{perimeter}]$

Hence, perimeter is doubled.

9. (C) Total tea after combining both bags

$= \left( 3\frac{3}{4} + 24\frac{1}{4} \right) \text{kg}$

$= \left( \frac{15}{4} + \frac{97}{4} \right) \text{kg}$

$= \frac{112}{4} \text{kg}$

$= 28 \text{ kg}$

Amount of tea in 40 bags = 28 kg

$\therefore$  Amount of tea in 1 bag =  $\left( \frac{28}{40} \right) \text{kg}$

$= 0.7 \text{ kg}$

$= \frac{7}{10} \text{ kg}$

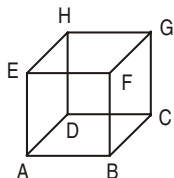
10. (B) To check divisibility by 77, we should check the divisibility rule of 7 and 11.

From all given options,

Only 523523 is divisible by 11. same number is divisible by 7 and 13 also.

∴ Answer is option (B).

11. (C)



→ A cone has 2 faces



→ A cylinder has 3 faces



→ A triangular prism has 5 faces

There are 6 faces for a cube.

12. (B) As per the rule,  
'C' can be subtracted from 'D' and 'M' only, but we can not subtract 'C' from 'X' and 'L'.

∴ option (B) is wrong.

So, answer is option (B).

13. (D)  $\frac{l}{b} = \frac{5}{2} = \frac{5x}{2x}$

Now,  $P = 2(l + b)$

$$= 2(2x + 5x) = 14x$$

Nos,  $b = 2x = 4 \Rightarrow x = 2 \text{ cm}$

$$\Rightarrow p = 14x = 14 \times 2 = 28 \text{ cm}$$

14. (C)  $17(m - n) = 17m - 17n$

15. (C) I and II lie on line of symmetry.

II and V also lie on line of symmetry.

Hence I, II & V lie on lines of symmetry.

16. (B) Total pupils = 300

120 were boys.

$$\Rightarrow \% \text{ of boys} = \frac{120}{300} \times 100 = 40\%$$

40% of boys received free tickets.

17. (A) Required L.C.M. =  $\frac{\text{L.C.M. of } (1, 5, 1, 3)}{\text{H.C.F. of } (5, 8, 3, 16)}$
- $$= \frac{15}{1} = 15$$

18. (A)  $b = \sqrt{ac}$
- $$= \sqrt{(0.32)(0.02)}$$
- $$= \sqrt{0.0064}$$
- $$= \sqrt{(0.08)^2}$$
- $$= 0.08$$

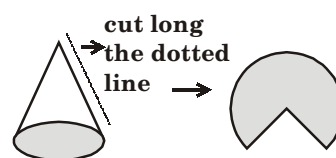
19. (B) Minimum students in the class = L.C.M. of 6, 8, 10

2	6, 8, 10
2	3, 4, 5
2	3, 2, 5
3	3, 1, 5
5	1, 1, 5
	1, 1, 1

$$\therefore \text{L.C.M.} = 2 \times 2 \times 2 \times 3 \times 5 = 120$$

20. (B) Angle at a point is  $360^\circ$

21. (D) 



22. (A) Angle subtended by the end of a chord in the major segment is always acute.

23. (B) Total sweets =  $(19 \times 228) = 4332$ .

$$\begin{aligned} \text{Sweets left after giving} &= 4332 - 519 \\ &= 3813 \end{aligned}$$

24. (A) If number of integers are equal after decimal points then we can say the two terms are like decimal.

25. (A) Bar graphs is also known as column graphs.

## **PHYSICAL SCIENCE**

26. (C) The accuracy of a measurement can be increased by taking the average of several readings.
27. (D) A metre ruler is a standard tool of measurement.
28. (C)  $1\text{ m} = 1000\text{ mm}$   
 $\frac{1}{10}\text{ m} = 100\text{ mm}$
29. (D) Artificial magnets can be made from magnetic materials. Lode stone is a natural magnet.
30. (C) Gloves worn by electricians are made up of rubber, because rubber is an insulator.
31. (A) The nature of image formed by a pin hole camera is real and inverted.
32. (A) Magnets are used as door stoppers.  
Pure stainless steel is not always attracted by magnets.
33. (D) In SI unit, length is measured in metres.  
 $1\text{ m} = 1000\text{ mm}$   
 $\therefore 5643\text{ mm} = \frac{5643}{1000} = 5.643\text{ m}.$
34. (D) If battery is dead, a bulb does not get supply of energy. So, bulb does not glow. If filament is broken also bulb does not glow.
35. (B) The reason for filling sealing wax in the space in between the terminals of the bulb is to prevent the contact of terminals with one another.
36. (B) Stretching of a spring on suspending a weight is man made and is also reversible.
37. (D) Fish tank is fragile, it allows light to pass through it and made up of hard material.
38. (B) Water being a good solvent dissolves the dirt and other substances from our clothes and removes them.
39. (A) Allows most of the light to pass through them. This is the characteristic property of transparent objects.
40. (C) The rain coat is water proof. So, it prevents Mohit from getting wet.

41. (B) X – floats in water – plastic.  
Y – sinks in water – silver coin.
42. (D) A mixture of husk from grains is separated by winnowing.  
Sieving is a method of separation applied to separate particles of different sizes.
43. (C) Water vapour in the air condenses to form clouds.
44. (D) The materials given in group 'X' are usually made up of plastic. The materials given in group 'Y' are usually made up of glass.
45. (C) Glass gets scratches more easily than plastic, porcelain and metal.


## **BIOLOGY**

46. (D) Spinning is drawing yarn (thread) from cotton fibre. This is done on spinning wheel or charkha.
47. (C) Mimosa plant is called 'touch-me-not' plant. It is sensitive to touch. It immediately fold its leaves and droop down when we touch.
48. (B) Fibres from hemp plant are obtained from the bark or the stem.
49. (D) Terrestrial ecosystem includes those organisms which live on land. It is classified into three types - Forest ecosystem, Grassland ecosystem and Desert ecosystem.
50. (C) Given figure is of fibrous root. Many small roots arise from the point where the stem touches the ground.
51. (C) The given plants are examples of climbers.
52. (C) Deficiency of vitamin C causes scurvy. Vitamin C is necessary for keeping gums and joints healthy and building resistance to infections.
53. (A) Option 'A' consists of a herbivore (Giraffe), carnivore (house lizard) and an omnivore (rat).
54. (D) Fins and tail help the fish to move in water
55. (D) Fishes have endoskeleton made of cartilage, scorpion with exoskeleton and earthworm with hydrostatic skeleton.

## CRITICAL THINKING

56. (C)  = 10

 = 6

 = 2

$10 + 6 + 2 = 18.$

57. (D) Varu, Karan, Charan could not get second place because tarun in in second place.

\_\_\_ \_\_\_ T \_\_\_

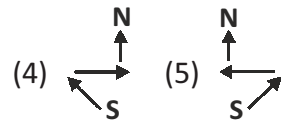
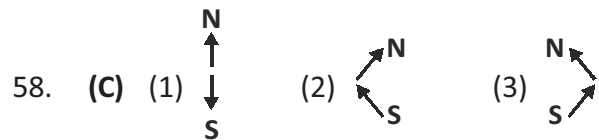
Karan and Varun they both will be together and Karan is in front of Varun

So, V K T \_\_\_

obviously Charan will be at 1<sup>st</sup> place

V K T C

Varun is at fourth place.



59. (C) If you pass the person in the second place then the second place person will take third place and you will be in the second position.
60. (C) It provides exercise for the children which is very essential for the development of a health mind and body.

===== The End =====