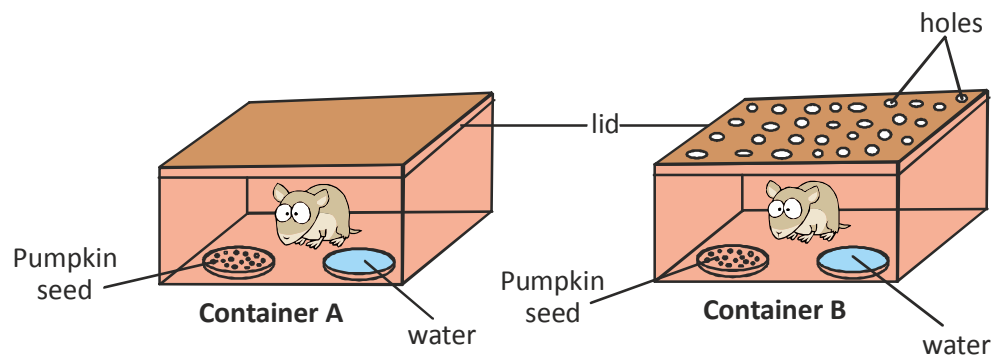


01 Two rats of the same size and mass are placed into two different containers as shown below. Each rat is given on equal amount of pumpkin seeds and water.



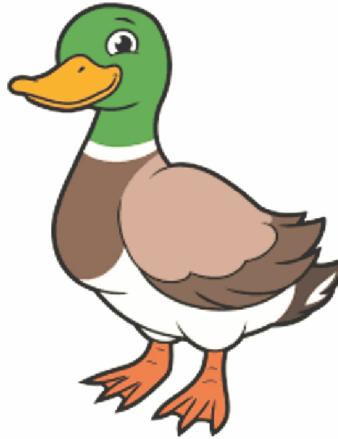
(a) Which rat is likely to die first ?

The rat in container A is likely to die first.

(b) Give a reason for your answer in (a).

Living things need water, food and air to survive. Container A is sealed and hence, the rat will not have sufficient air to survive.

02 Study the diagram of a duck.



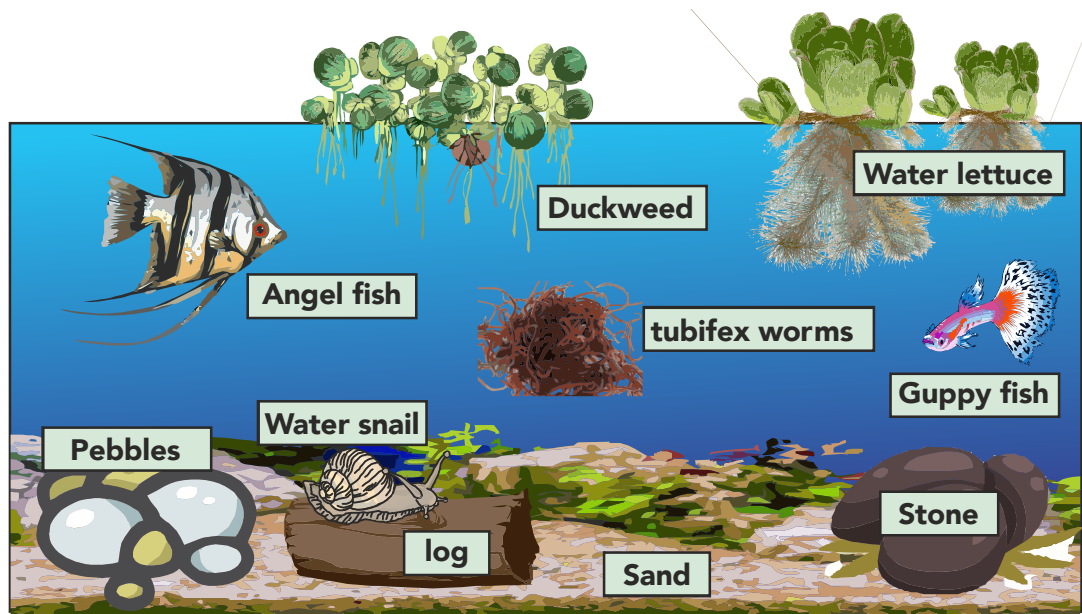
(a) State two ways in which a duck moves about.

- I. Waddle/Swim
- II. Fly

(b) Explain how a duck is able to move in those ways.

The duck has a pair of webbed feet which enables it to stand firm on land. Its feet also enable it to paddle and swim in the water. Its pair of wings enables it to fly.

03 Look at the picture of an aquarium. There are several living things shown below.



1. Name the non-living things.

pebbles, log, stone, sand

2. Name the living things that can make their own food.

duckweed and water lettuce

3. Name the living things that can move from place to place by themselves for food.

angelfish, tubifex worms, water snail and guppy fish

04 State the most important basic need that each of the living things need in the situations below. Write your answer in the box provided.

A tiger feeding on a deer



FOOD

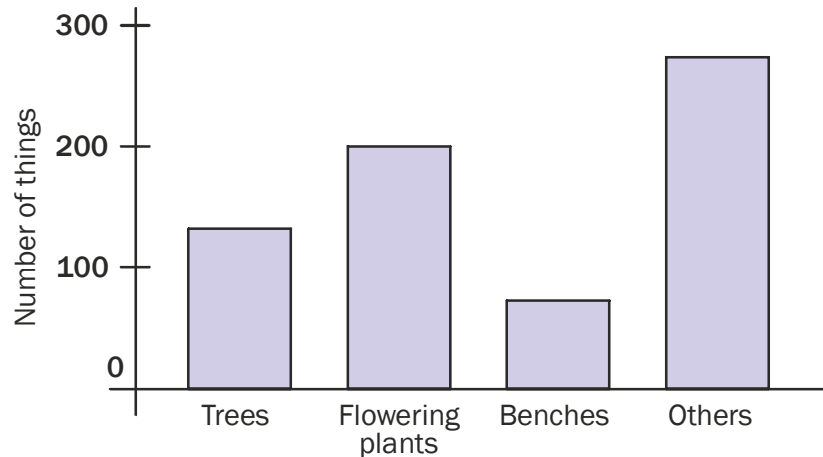
A diver diving in the ocean



OXYGEN

05

The graph below shows the number of things found in a park.



The statements describe the park. Put a tick (✓) for each statement in the correct column.

	Statement	True	False	Not possible to tell
a	There are living and non-living things in the park.	✓		
b	There are less than 200 flowering plants.		✓	
c	There are more living things than non-living things.	✓		
d	Besides trees, benches and flowering plants, there are 300 other living & non-living things.	✓		