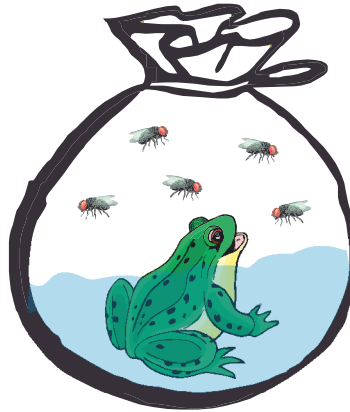


01 A live toad is left in a plastic bag filled with water and some flies for 5 days.



(a) What will happen to the toad after 5 days ?

Your solution here:

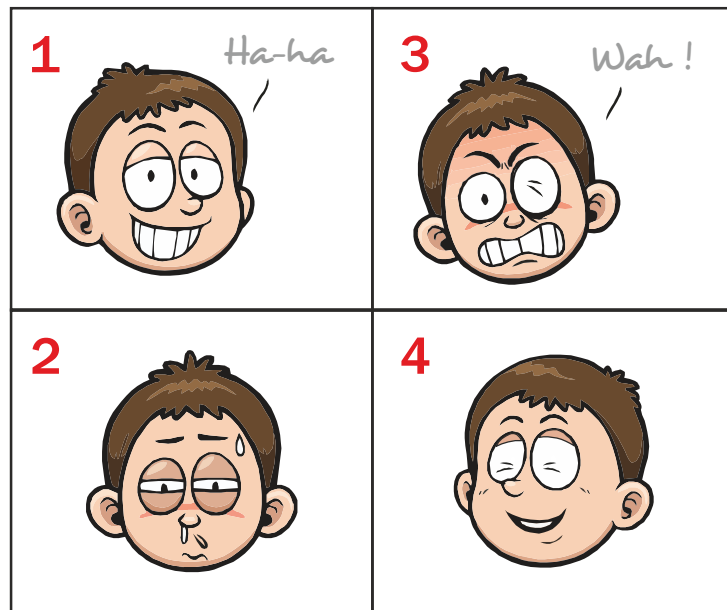
(b) Why will this happen ?

Your solution here:

(c) What can be done to keep the toad alive ?

Your solution here:

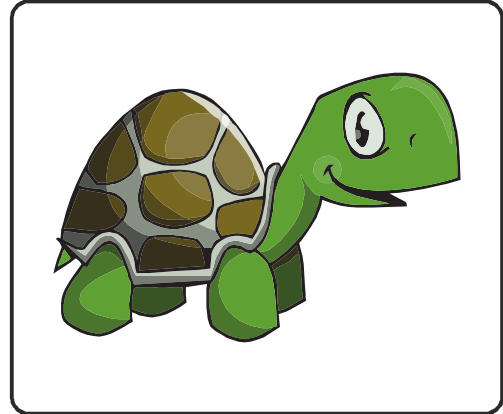
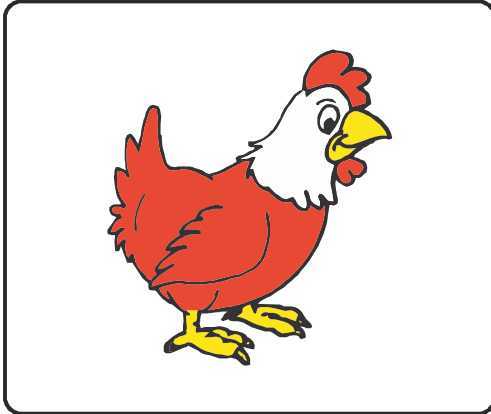
02 Look at the pictures below carefully.



How do people respond to the following ? Choose the responses from the pictures above.

A	Drinking lime juice	
B	Watching a comedy	
C	Being praised for doing a good deed	
D	Feeling cold	

03 Look at the animals below carefully.



(a) How are the two animals alike ?

Your solution here:

(b) How are the two animals different ?

Your solution here:

04 The picture below shows a mushroom.



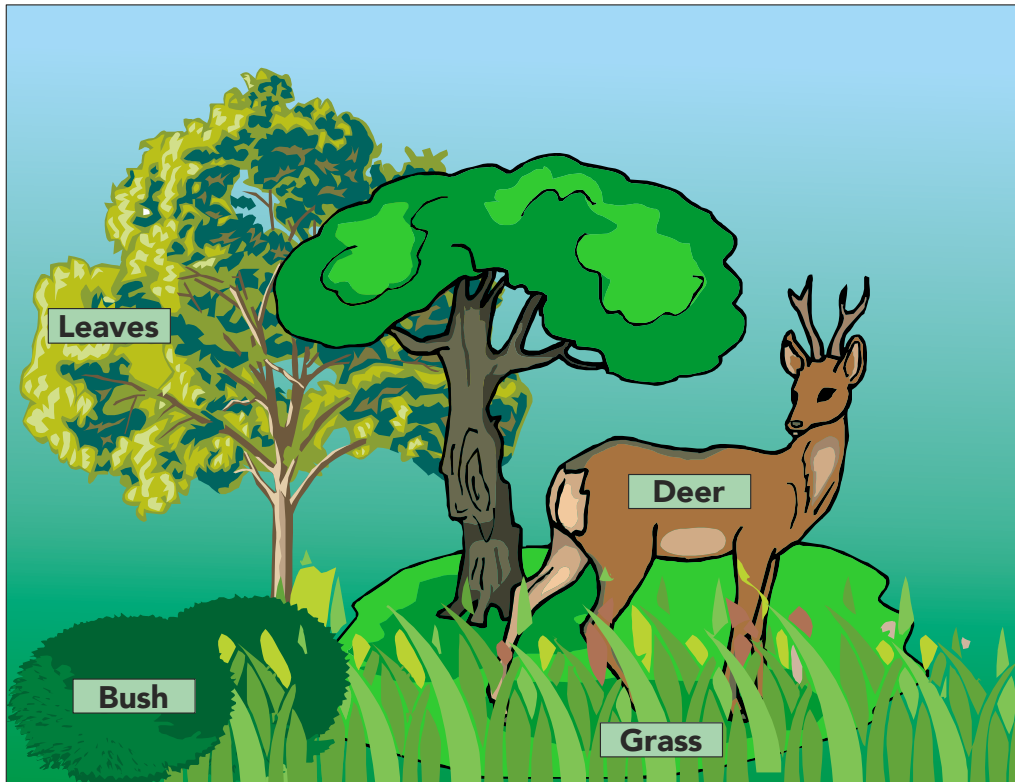
(a) Is a mushroom a plant ?

Your solution here:

(b) Explain your answer for (a).

Your solution here:

05 The diagram below shows a deer in a woodland environment.



In what way the deer depends on plants to survive ?

Your solution here: