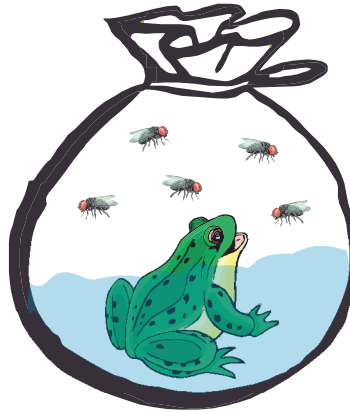


01 A live toad is left in a plastic bag filled with water and some flies for 5 days.



(a) What will happen to the toad after 5 days ?

It will die

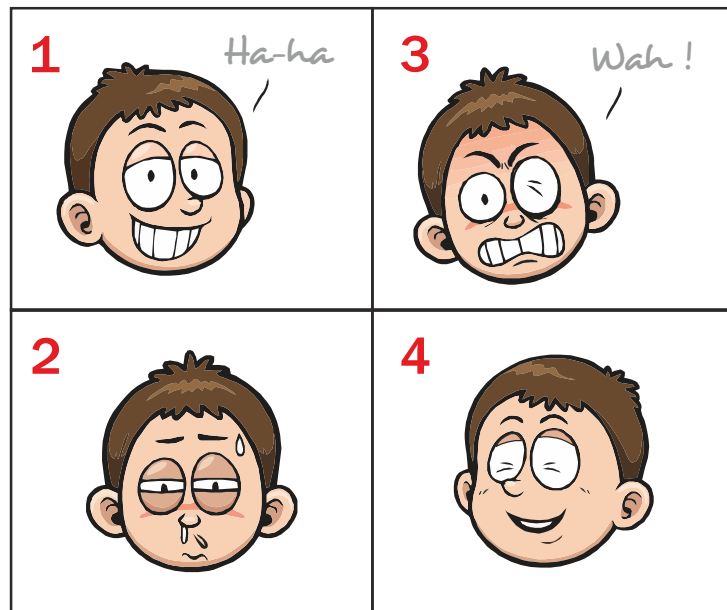
(b) Why will this happen ?

It does not have enough air

(c) What can be done to keep the toad alive ?

Poke some holes in the plastic bag to allow air to enter

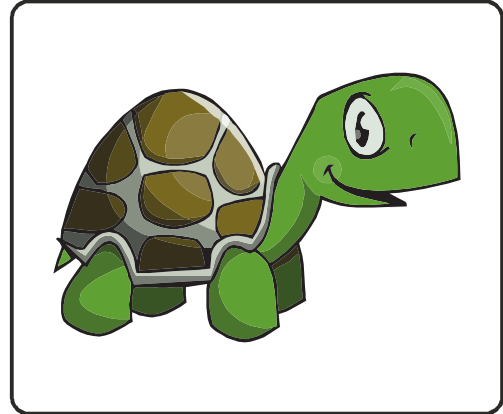
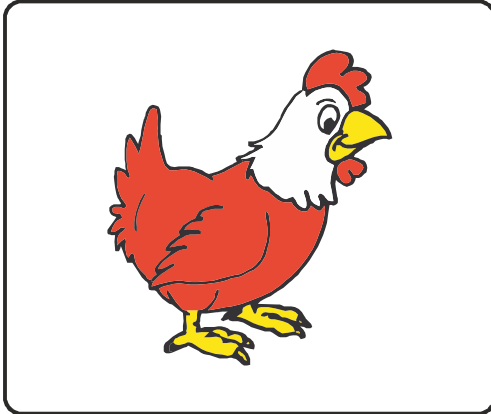
02 Look at the pictures below carefully.



How do people respond to the following ? Choose the responses from the pictures above.

A	Drinking lime juice	3
B	Watching a comedy	1
C	Being praised for doing a good deed	4
D	Feeling cold	2

03 Look at the animals below carefully.



(a) How are the two animals alike ?

They lay eggs.

(b) How are the two animals different ?

The hen has feathers as its body covering and the turtle is covered by scales and a shell. The hen has a pair of limbs while the turtle has two pairs of limbs.

04 The picture below shows a mushroom.



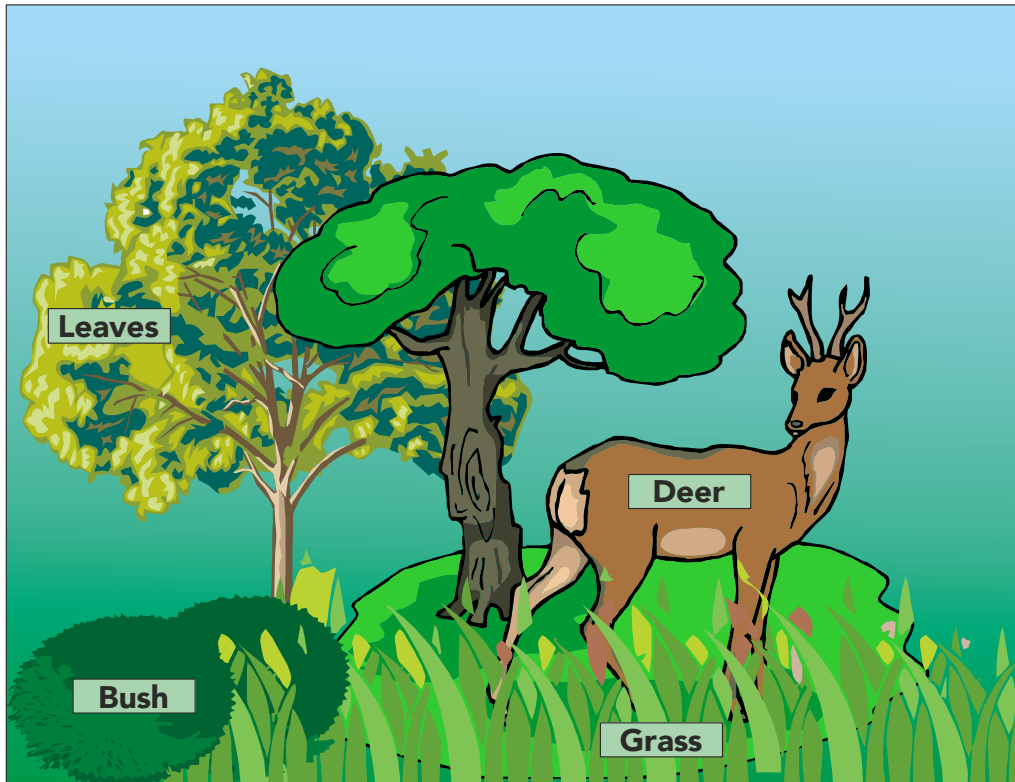
(a) Is a mushroom a plant ?

No

(b) Explain your answer for (a).

A mushroom does not have chlorophyll and it cannot make its own food.

05 The diagram below shows a deer in a woodland environment.



In what way the deer depends on plants to survive ?

- (A) Food
- (B) Shelter
- (C) Air