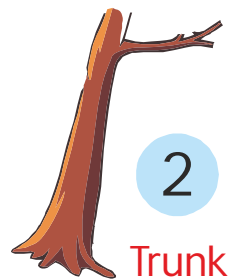
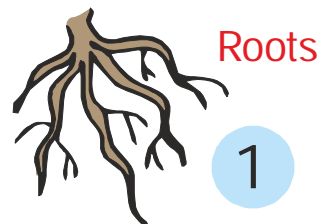
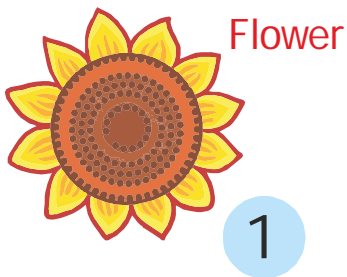
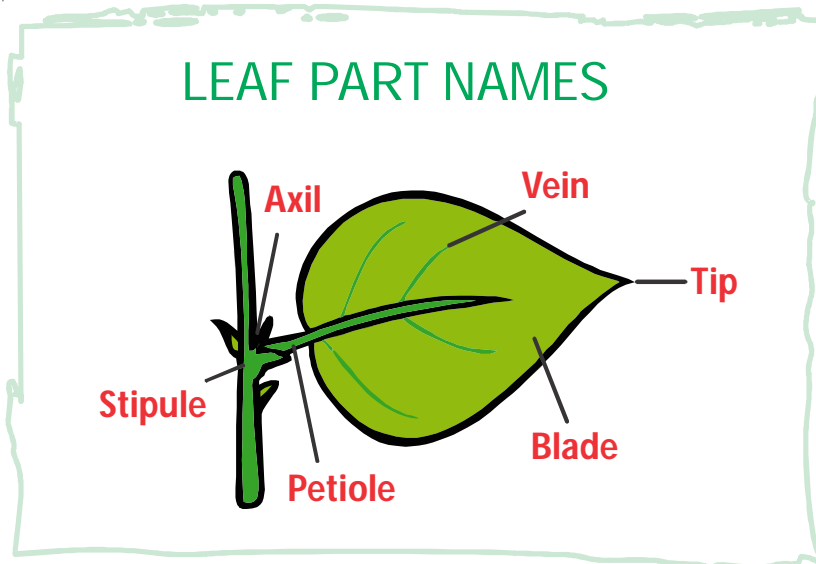


01

Aruna is confused about these plants. They seem to be missing some parts. What's missing? Name the plant parts that are given below. Then decide which parts are missing from these plants, and draw them where they belong. Write the number below the parts that are related to the given plants.



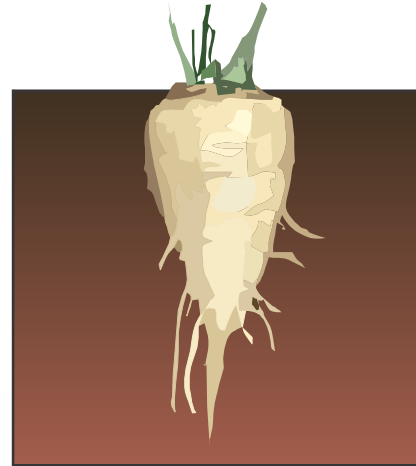
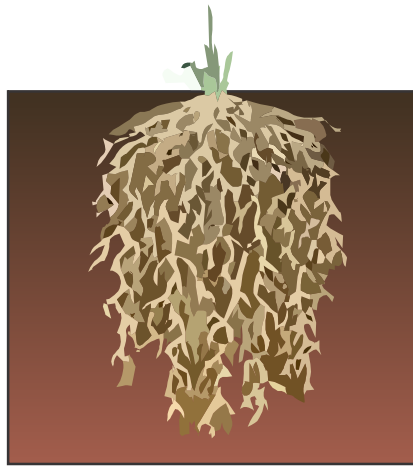
02 Leaves grow on stem. Leaves make food for the plant. Hence it is known as *kitchen of the plant*.



1. Leaves appear green because they contain the substance called Chlorophyll
2. Leaves give out a gas called Oxygen
3. Leaves have some plants store food Cabbage
4. Spinach , Mint , Coriander and Celery are eaten as food.



03 Root is the part of the plant that grows below the ground. Identify the type of roots from the given picture. Write two example of each.

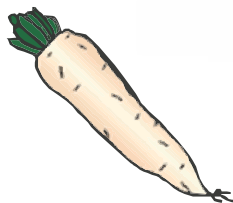


Type : Fibrous
Examples : Rice

Type : Taproot
Examples : Carrot

Uses of roots:

1. **Roots** help the plant stay fixed to the soil.
2. **Roots take in** **Water** and **Minerals** from the soil.
3. **We eat roots of** **Beet root** , **Radish** , **Carrot** , and **Turnip** .



04 This exercise checks that you understand the scientific words used in this unit.

I. Use these words in sentences. The first one has been done for you.

Water : Plants need water to grow

Roots : Roots absorb water for plants

Stem : Support the plant and bear leaves, fruits & flower

Leaves : Make food for the plant

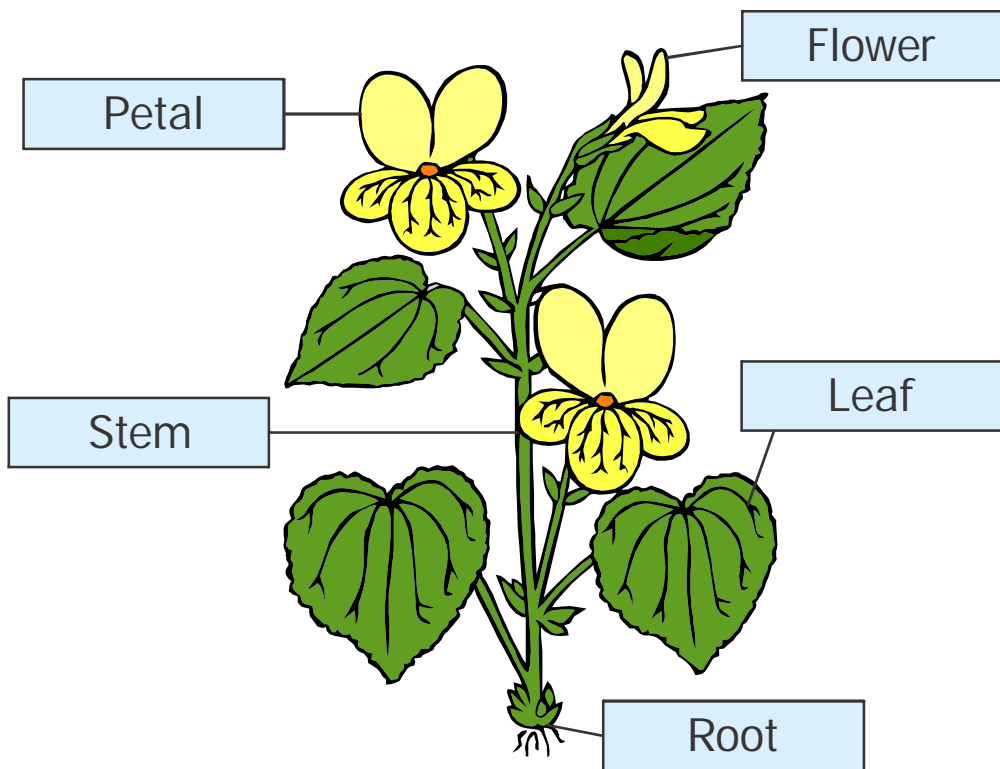
Flower : Produce fruits and seeds

II. Match the following:

	Column A			Column B
1	Tap root		P	The food factory
2	Trunk		Q	Exchange of gases
3	Fibrous root		R	One main root
4	Leaf		S	Absorbs the sunlight
5	Chlorophyll		T	Bushy roots
6	Stomata		U	Thick and strong stem

05 This exercise checks that you can name the parts of a plant. Label this plant using these words.

Petal Flower Leaf Stem Root



Make a list below of some of the plants that grow near where you live.

- | | | | |
|----|------------|----|---------------|
| 1. | Neem Tree | 2. | Banyan Tree |
| 3. | Rose Plant | 4. | Jasmine Plant |