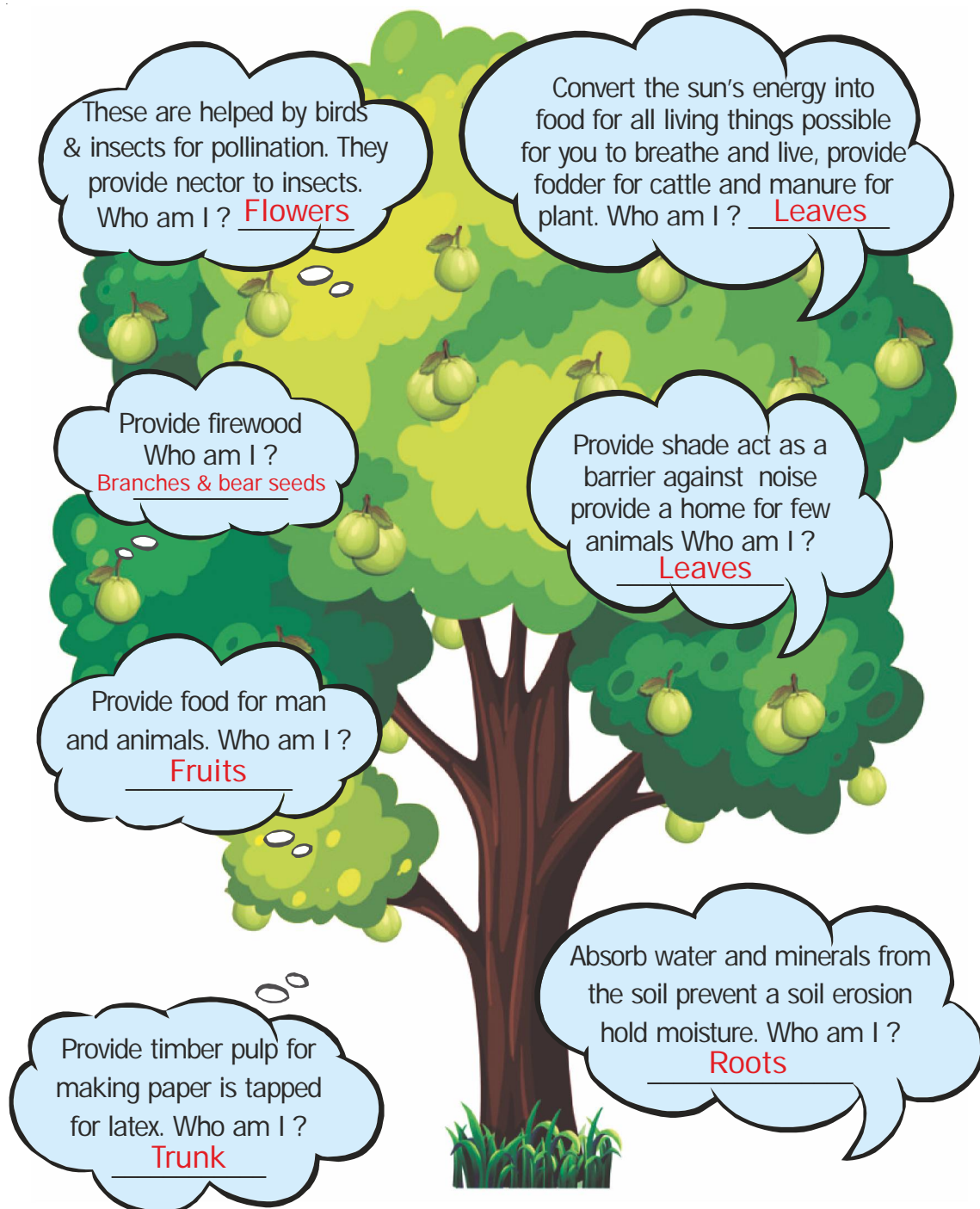


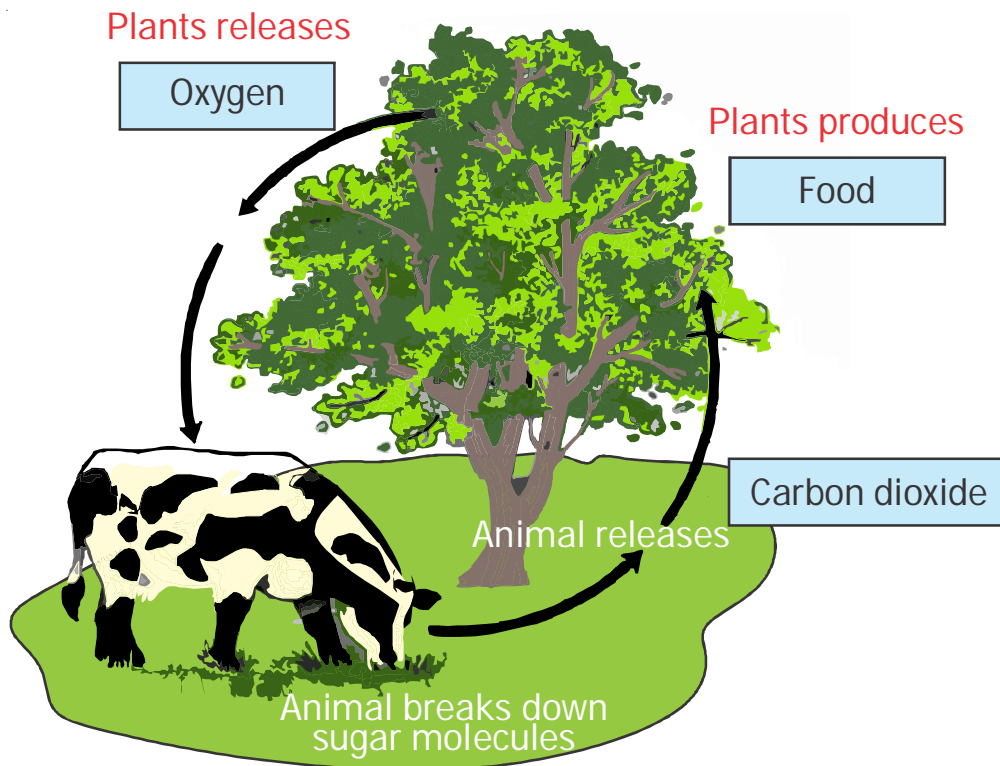
01

Read the functions given below and identify the parts of the plant.



02

- I) Observe the given picture and fill in the boxes and answer the following questions.

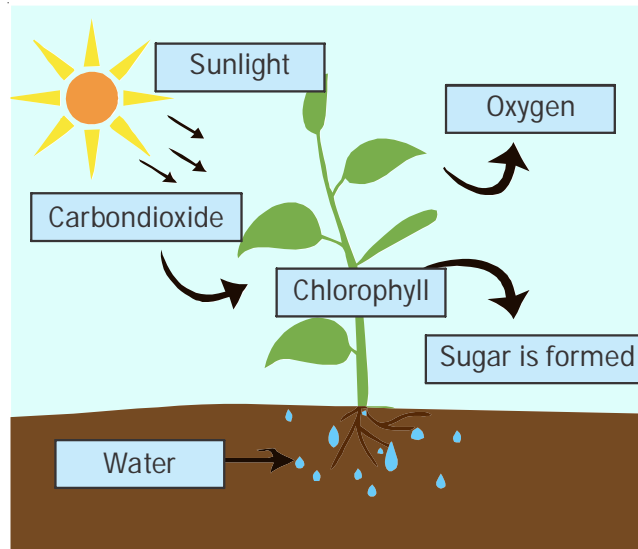


- II) Animals and plants are interdependent on each other. Justify it using the given picture.

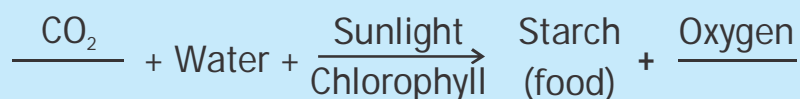
Plants releases oxygen during photosynthesis by using carbon dioxide that is released by breaking down sugar molecules.

03

Observe the given picture and fill in the boxes and answer the questions given below.



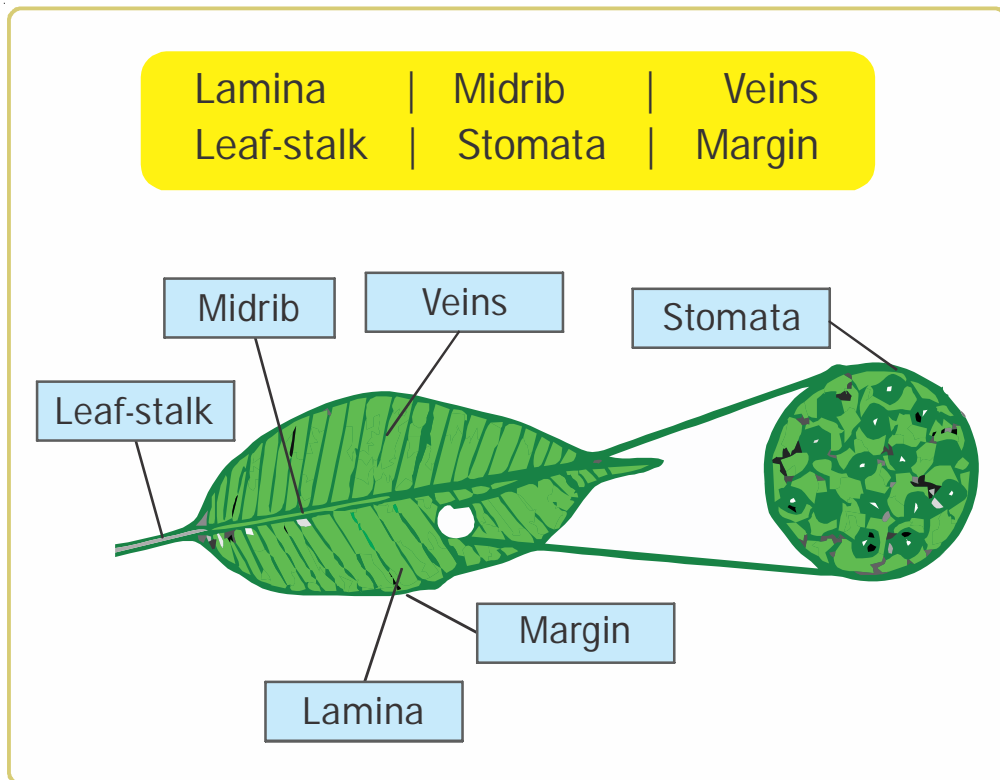
1. Identify the process shown in the above diagram. **Photosynthesis**
2. Name the gas taken the most by plants from air during photosynthesis. **Carbondioxide**
3. From where do plants get light energy ? **Sunlight**
4. Name the green pigment used by the plants. **Chlorophyll**
5. Which gas is given out as a result of photosynthesis ? **Oxygen**
6. Fill the missing words:



7. Which part of a plant is called food factory's ? **Leaf**

04

I) Observe the given picture and fill in the boxes and answer the following questions.



II. Name the following:

1. Kitchen of a plant
2. Lines on a leaf
3. The process of preparation of food by plants
4. The flat broad part of a leaf
5. Air holes on a leaf through which exchange of gases takes place

05 Complete the chart below to show the procedure of testing a leaf for starch.

