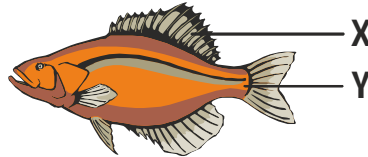


**01**

Observe the diagram of the fish below.



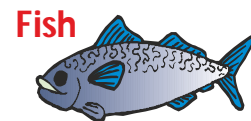
- (a) What is the function of the part marked X ?
- (b) What is the function of the part marked Y ?

Your solution here:

**02**

The diagram below shows a bird and a fish. Both the animals have structural adaptations, the former to move in air and the latter to move in water.

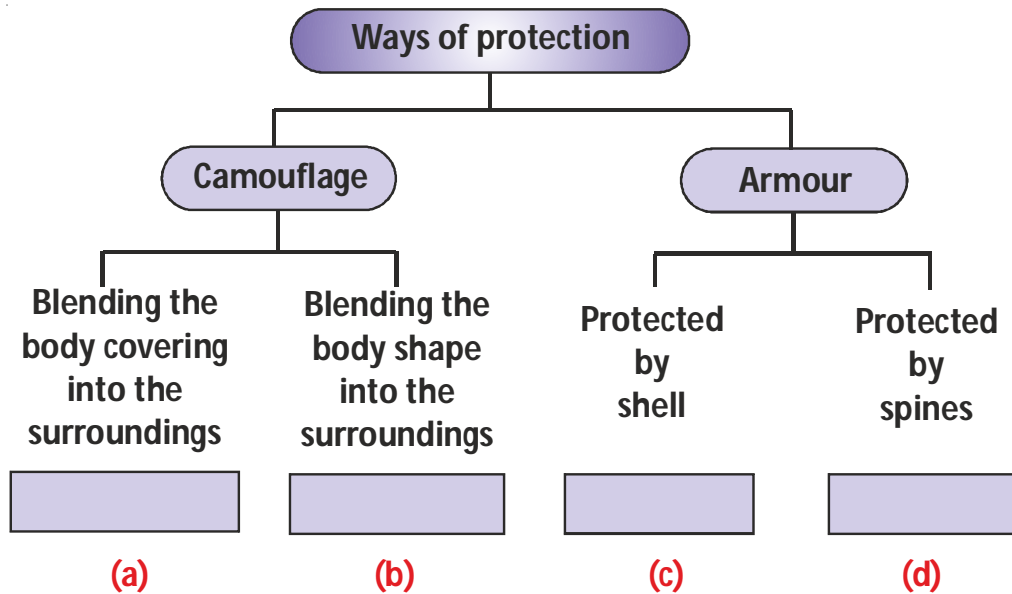
- (a) Give a common structural adaptation that allows both the animals to move.
- (b) Give an example of another animal that uses the same adaptation to move.



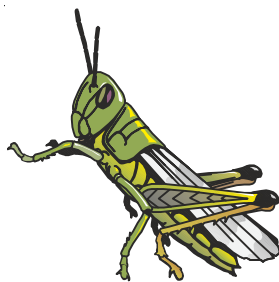
Your solution here:

**03**

1. Observe the diagram given below and fill in each box with an example of such an animal.



2. The two insects shown below are similar yet different in the way they avoid detection by predators



**Grasshopper**



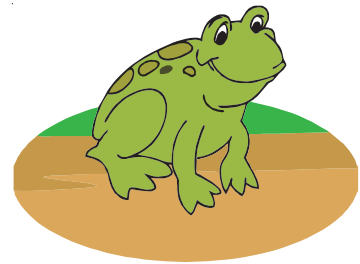
**Stick insect**

Identify one similarity and one difference between the two insects.

Your solution here:

**04**

- (a) Name an animal that is adapted to live both on land and in water ?
- (b) Through what organ does it breathe when it is in water ?
- (c) With what organ does it breathe when it is on land ?

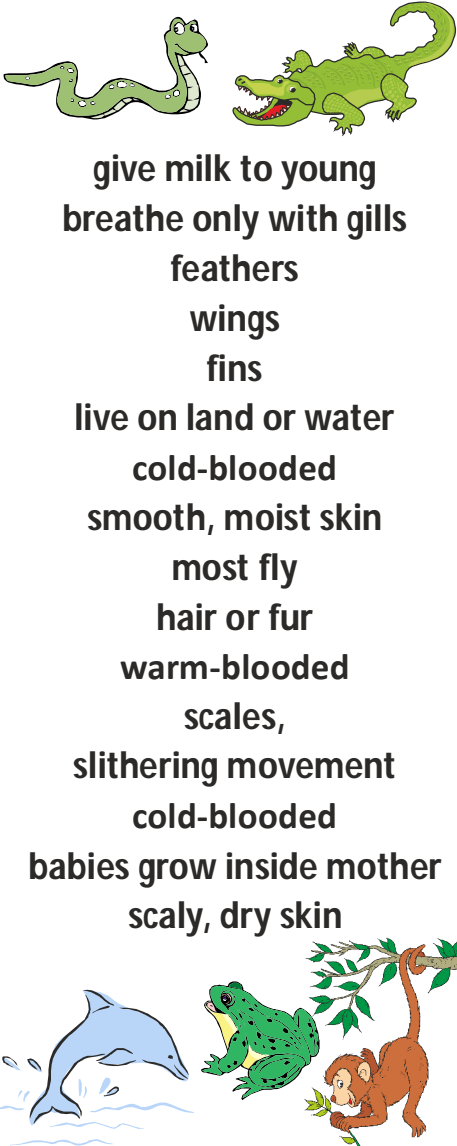


Your solution here:

**05**

Do you remember that vertebrates are animals with backbones ? There are 5 different groups of vertebrates.

On these 2 pages, there is a wheel for each group. Some words or pictures are missing from the wheels. Look at the list. Write each word or draw each picture on the right wheel.



give milk to young  
 breathe only with gills  
 feathers  
 wings  
 fins  
 live on land or water  
 cold-blooded  
 smooth, moist skin  
 most fly  
 hair or fur  
 warm-blooded  
 scales,  
 slithering movement  
 cold-blooded  
 babies grow inside mother  
 scaly, dry skin

