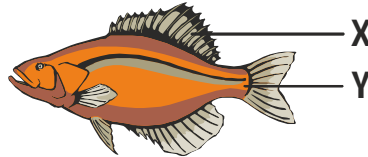


01

Observe the diagram of the fish below.



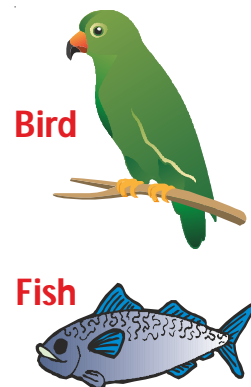
- (a) What is the function of the part marked X ?
(b) What is the function of the part marked Y ?

- (a) Part X helps the fish to balance itself and prevents the fish from rolling.
(b) Part Y helps to propel the fish forward.

02

The diagram below shows a bird and a fish. Both the animals have structural adaptations, the former to move in air and the latter to move in water.

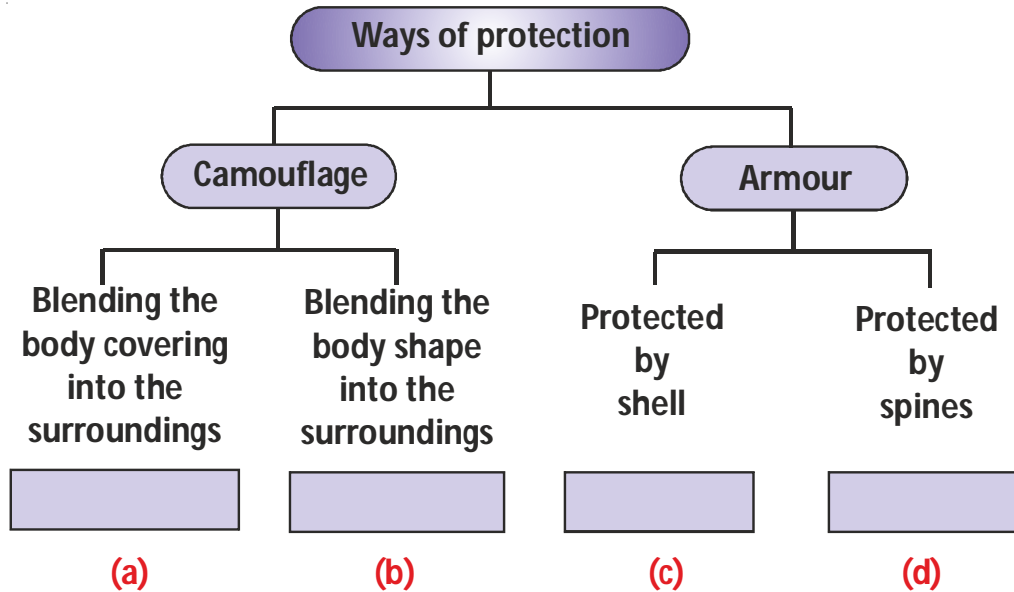
- (a) Give a common structural adaptation that allows both the animals to move.
(b) Give an example of another animal that uses the same adaptation to move.



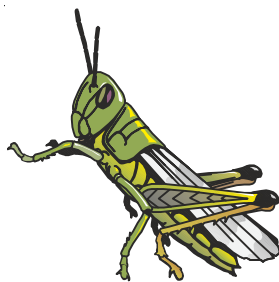
- (a) Both animals have streamlined body shapes.
(b) A seal/dolphin adopts a streamlined shape to move in water.

03

1. Observe the diagram given below and fill in each box with an example of such an animal.



2. The two insects shown below are similar yet different in the way they avoid detection by predators



Grasshopper



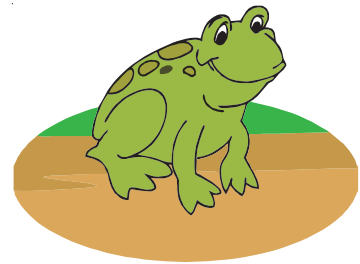
Stick insect

Identify one similarity and one difference between the two insects.

1. Wings
2. Feathers
3. Most fly
4. Warm blooded
5. Fins
6. Scales
7. Breathe only with gills
8. Smooth and moist skin
9. Breathe through moist skin and lungs
10. Live both on land and in water
11. Give milk to young
12. Hair or fur
13. Babies grow inside mother

04

- (a) Name an animal that is adapted to live both on land and in water ?
- (b) Through what organ does it breathe when it is in water ?
- (c) With what organ does it breathe when it is on land ?

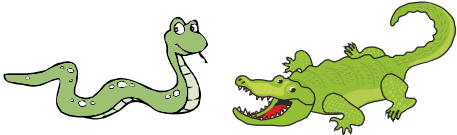


- (a) Frog
- (b) Skin
- (c) lungs

05

Do you remember that vertebrates are animals with backbones ? There are 5 different groups of vertebrates.

On these 2 pages, there is a wheel for each group. Some words or pictures are missing from the wheels. Look at the list. Write each word or draw each picture on the right wheel.



give milk to young
 breathe only with gills
 feathers
 wings
 fins
 live on land or water
 cold-blooded
 smooth, moist skin
 most fly
 hair or fur
 warm-blooded
 scales,
 slithering movement
 cold-blooded
 babies grow inside mother
 scaly, dry skin

