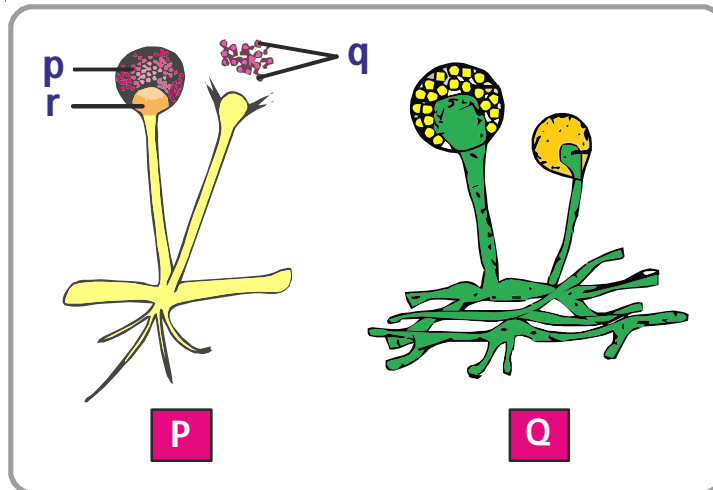


01

Observe the given figure and answer the questions given.



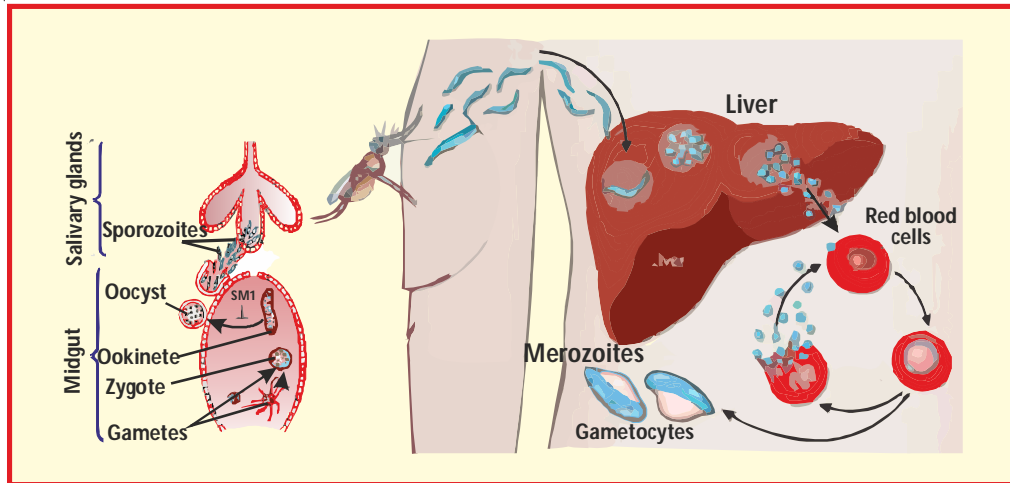
- (i) Identify 'P' and 'Q'.
- (ii) Label the parts (p, q, and r) and write their respective functions.
- (iii) Write any 2 main characteristic features of P and Q.
- (iv) Write two uses of P and Q.

Your solution here:

Your solution here:

02

Observe the given figure and answer the following questions.

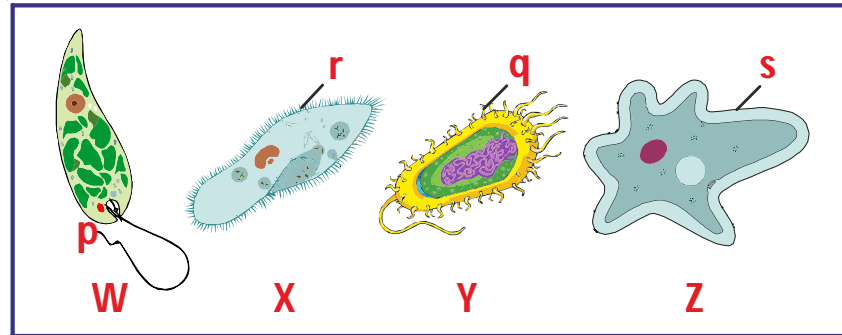


- (i) What does the figure show ? Identify. Name it.
- (ii) Fill in the blanks.
 - (a) _____ parasite is transmitted from human to human through bite of _____ of genus _____, causing a disease called _____.
 - (b) During the bite, _____ get injected into human host. These invade the liver wherein they develop into _____ which inturn invade _____ of blood and multiply by _____ method.
- (iii) Name the host(s) on which disease causing organism shown in the picture lives as a parasite ?
- (iv) Give three main symptoms of the said disease.
- (v) Name the drug which is used in the treatment of disease.
- (vi) Suggest 3 preventive measures.

Your solution here:

03

Observe the following organisms carefully, answer the following questions.

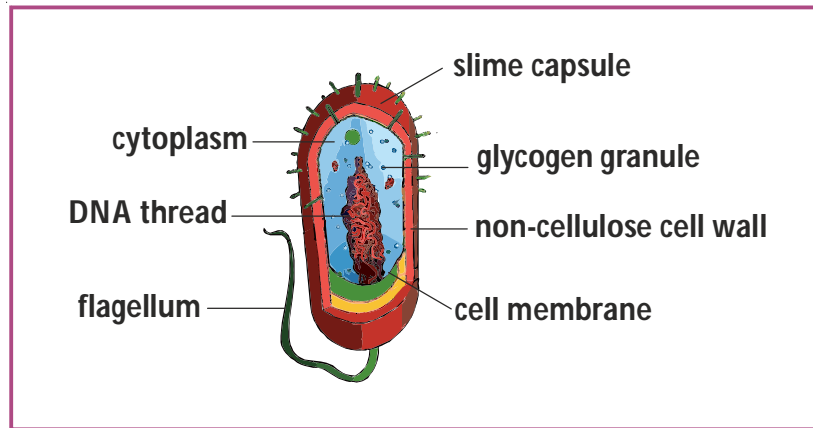


- (i) Identify the organisms (W, X, Y and Z) shown. Name them.
- (ii) Label the parts - p, q, r, and s.
- (iii) What do you think are the distinguishing features of p, q, r and s.

Your solution here:

04

The following diagram shows a cell of living organism X.



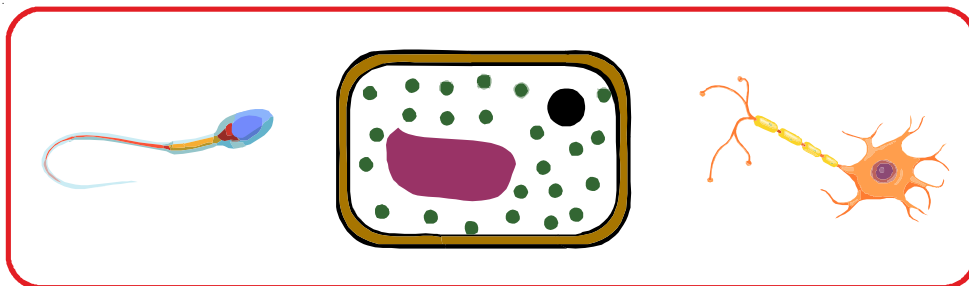
(a) Compare five differences between cell X and a typical plant and animal cells.

Structures	Cell X	Plant cell	Animal cell

- (b) It was noticed that cell X had much more mitochondria than plant cells. Suggest a reason for this.

Your solution here:

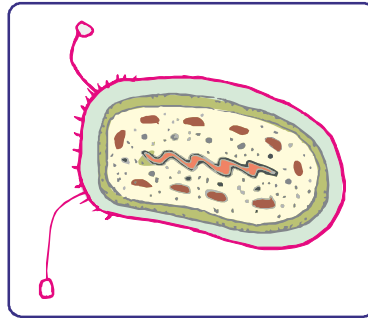
- (c) State two ways in which cell X is similar to the three cells shown in the diagrams below.



Your solution here:

05

- (a) The phrase 'division of labour' is used to describe the organisation in multicellular organisms.



- (i) Explain the meaning of this phrase in your own words.
(ii) What is the significance of this division of labour ?
- (b) Scientists found this cell on a remote planet. Using your knowledge of cells, state whether it is of plant or animal origin, giving reasons for your answer.

Your solution here:

Your solution here: