

01 Animals are living things. We have learnt in our previous classes that we keep some animals at our homes or farms. They are very useful to us in many ways. These animals are called domestic animals. Can you name the domestic animal(s) which –

1. gives us wool ?

(a)

2. gives us honey ?

(a)

3. give us eggs ?

(a) (b)

4. are used for riding ?

(a) (b)

5. plough our fields ?

(a) (b)

6. we love to keep at home ?

(a) (b)

7. pull the cart ?

(a) (b)

8. gives us milk ?

(a) (b) (c)

9. gives us flesh ?

(a) (b) (c)



02 Name three animals that match the given clues in each group.

Animals that feed on plants and flesh of other animals

--	--	--

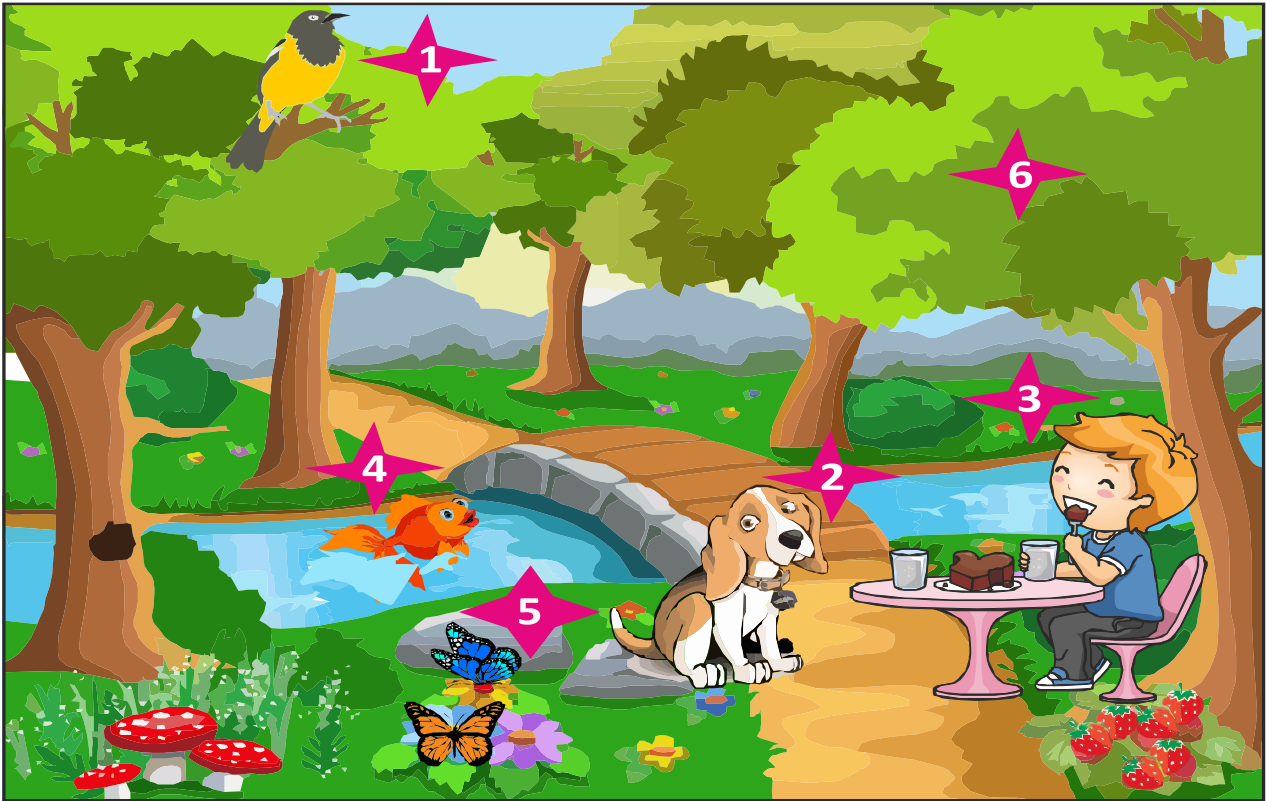
Animals that eat fruits, grains, plants, and seeds and are also known as plant eaters.

--	--	--

Animals that feed on the flesh of other animals, insects and worms.

--	--	--

03 Observe the given figure.



1. Which numbered living thing lives only in water ?

2. Which numbered living thing visit flowers to get its food ?

3. Which numbered living thing has two legs with wings ?

04 In this exercise, you will practise matching the example to their eating habit. Match the Animals to its eating Habit.

The diagram features a light blue circular background. In the center, there are three green rounded rectangular buttons labeled "HERBIVORE", "OMNIVORE", and "CARNIVORE" stacked vertically. Surrounding these buttons are 18 different animals: a crow, a bear, a deer, a cheetah, a horse, a tiger, a cow, a squirrel, a giraffe, a lion, a goat, a dog, a chicken, a sheep, an elephant, and a fox. A red arrow originates from the crow and points to the "OMNIVORE" button.

05 Match the following pictures with the words. One has been done for you.

The diagram consists of four rows of items. Each row has a picture on the left, a yellow rounded rectangular label in the center, and another picture on the right. A blue line connects the top-left picture (sheep) to the 'Dairy' label, and another blue line connects the 'Dairy' label to the top-right picture (honey jar). The other rows are: a cow picture, a 'Sheep farm' label, an egg picture; a bee picture, a 'Poultry' label, a milk carton picture; and a rooster picture, an 'Apiary' label, and a ball of wool picture.