

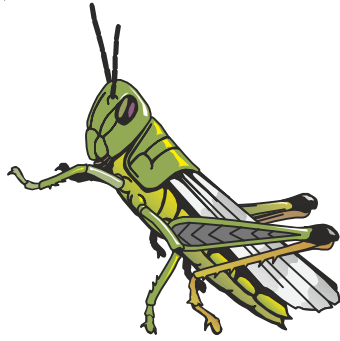
01 Mammals are warm-blooded animals that need to keep the body temperature constant. To reduce heat loss, those that live on land often have thick fur coats, while those that live in water have a thick layer of fat under their skin.



- (a) Given that the thick fur coat of a land mammal works in the same way as a woollen jacket when you wear it, infer how the fur coat helps to keep a land mammal warm.
- (b) Explain why fur is not a suitable feature for reducing heat loss when in water. Also, explain why a thick layer of fat plays a more important role in this situation.

Your solution here:

02 Two insects shown below are similar yet different in the way they avoid detection by predators



Grasshopper

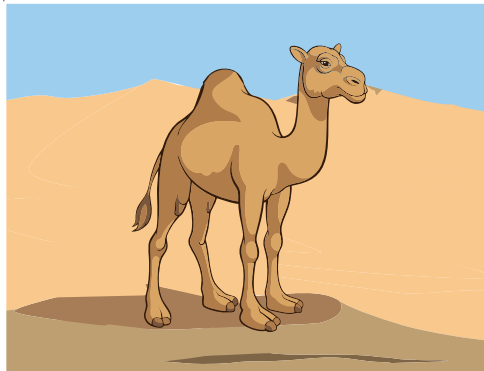


Stick insect

Identify one similarity and one difference between the two insects.

Your solution here:

03 The camel is called 'the ship of the desert'. It has several adaptations to survive in the desert.



Write the functions of the parts of the camel shown below.

	<p>Hump helps the camel to</p>
--	--------------------------------

	<p>Eyelids help the camel to</p>
--	----------------------------------

	<p>Leathery patches at knees help the camel to</p>
--	--

	<p>Feet of the camel helps it to</p>
--	--------------------------------------

04

Animals eat different foods. Some animals, such as the lion, eat meat and often have to catch their own food. These animals are called carnivores. Other animals, such as the kangaroo, eat only grass and plants. These animals are called herbivores. Some animals, such as humans, eat meat and vegetables. These animals are called omnivores.

Write the names of each of these animals in the correct box and write what food they eat.

Lion	Rabbit	Frog	Shark	Giraffee
Elephant	Dog	Eagle	Tiger	Crow
Rat	Cow	Horse	Human	Fish

CARNIVORES		
HERBIVORES		
OMNIVORES		

05

Use the word bank and letter clues to name each of the different types of animals described here. Then find an example for each category.

I [] S E [] T S

Have body with three segments.

Example: []

A M [] H I B [] [] N

Most have a moist skin and breathe through their lungs and the moist skin

Example: []

R [] P T I L [] S

Animals with dry scaly skin.

Example: []

[] [] R [] S

Animals with a light body and are covered with feathers.

Example: []

M [] M M [] L S

Most of the animals give birth to babies and their bodies have hair.

Example: []