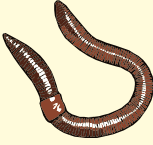






01 In this exercise, you will practice comparing the breathing methods of animals.

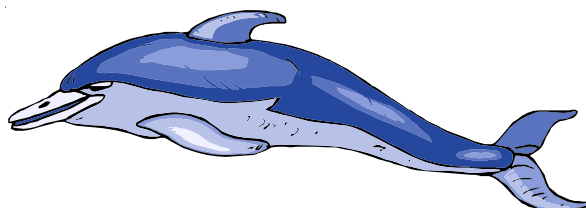
Breathing methods of Animals	 Annelids	 Insects	 Fishes	 Mammals	 Parasite
Organs					
Examples					

02 (a) Which group of animals does the Dolphin belong to ?

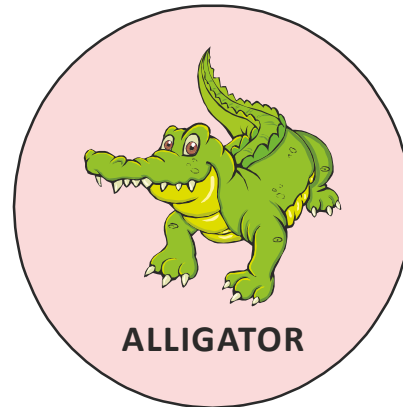
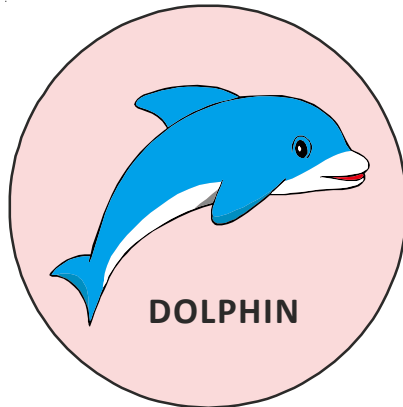
(b) State two characteristics of the Dolphin that made you put it in the group you answered in (a).

(i)

(ii)



- 03** (a) State a similarity between the two animals.
(b) State a difference between the two animals.



Your solution here:

04

The picture below shows a herd of Elephants.

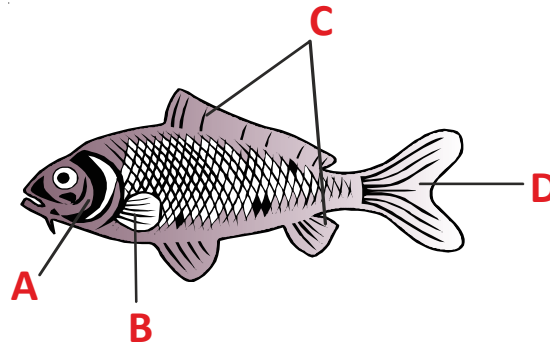


1. How do the animals above adapt to escape from their predators ?
2. Explain why this method of adaptation by the elephant is effective ?

Your solution here:

05

A fish is specially adapted to live in water.



Listed below are the different parts of a fish and their functions. Match them correctly to their functions.

Part	Function
A	(1) Helps to push the fish through water.
B	(2) Enables the fish to breathe in water.
C	(3) Helps the fish to move in different direction.
D	(4) Helps to keep the fish upright. Also used for sudden direction changes.

Your solution here: