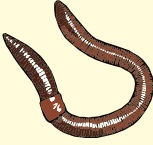






01 In this exercise, you will practice comparing the breathing methods of animals.

Breathing methods of Animals	 Annelids	 Insects	 Fishes	 Mammals	 Parasite
Organs	Moist skin	Spiracles	Gills	Lungs	Body wall
Examples	Earthworm & Frog	Cockroach & Grasshopper	Fish & prawns	Rabbit & Cat	Tapeworm

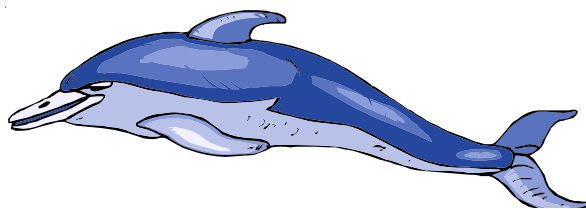
02 (a) Which group of animals does the Dolphin belong to ?

Mammals

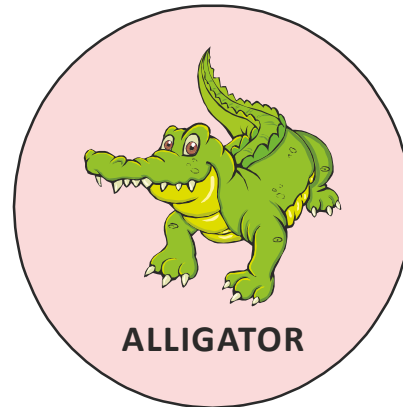
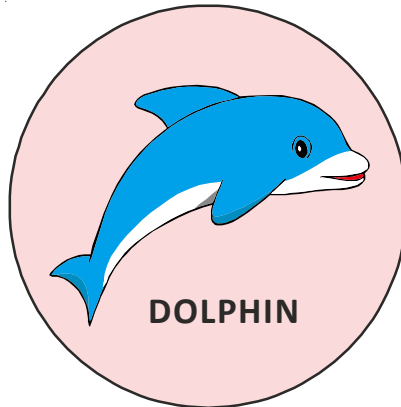
(b) State two characteristics of the Dolphin that made you put it in the group you answered in (a).

(i) Dolphin gives birth to young baby seals

(ii) Dolphin has an outer covering of hair



- 03** (a) State a similarity between the two animals.
(b) State a difference between the two animals.



- (a) Both can swim
(b) Dolphins give birth to their young while alligators reproduce by laying eggs.

or

Dolphin has an outer covering of hair while alligator has an outer covering of scales.

or

Dolphin is a mammal while alligator is an Reptilian.

04

The picture below shows a herd of Elephants.

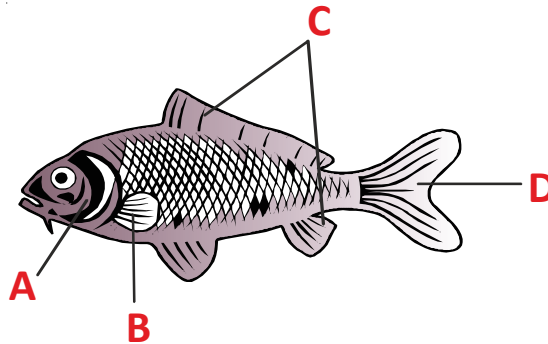


1. How do the animals above adapt to escape from their predators ?
2. Explain why this method of adaptation by the elephant is effective ?

1. They form herds.
2. A predator finds it more difficult to attack an elephant in a group as compared in attacking alone elephant.

05

A fish is specially adapted to live in water.



Listed below are the different parts of a fish and their functions. Match them correctly to their functions.

Part		Function
A	(1)	Helps to push the fish through water.
B	(2)	Enables the fish to breathe in water.
C	(3)	Helps the fish to move in different direction.
D	(4)	Helps to keep the fish upright. Also used for sudden direction changes.

A – (2)

A : Gills

B – (3)

B : Pectoral fin

C – (4)

C : Dorsal fin

D – (1)

D : Tail