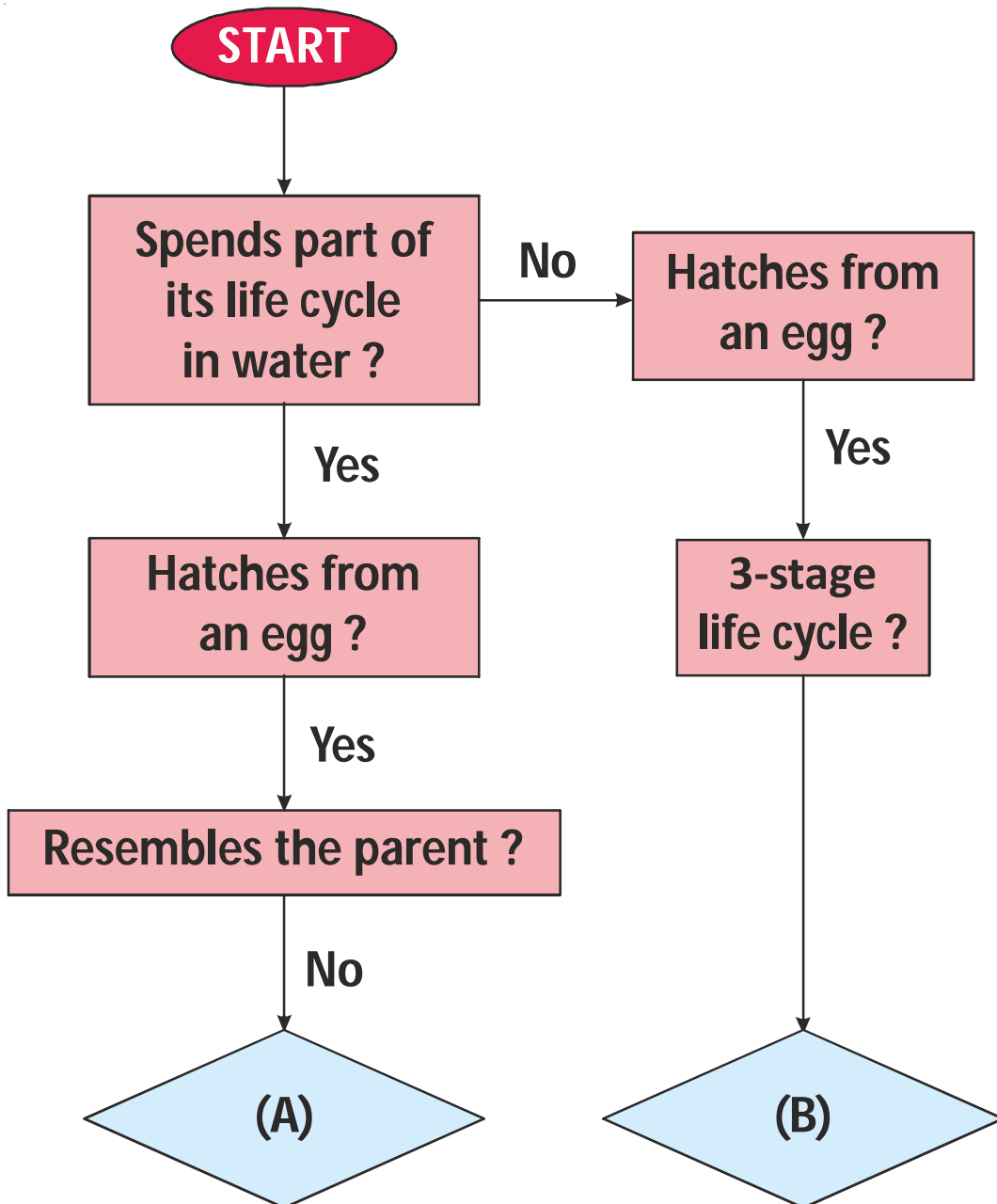
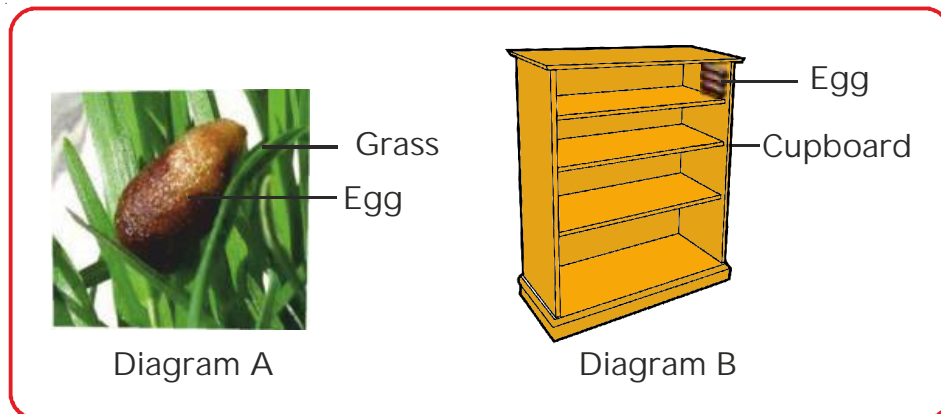


**01** Study the flowchart given below.  
What could 'A' and 'B' represent ?



**02** Study the diagrams of the eggs of a cockroach and a grasshopper.

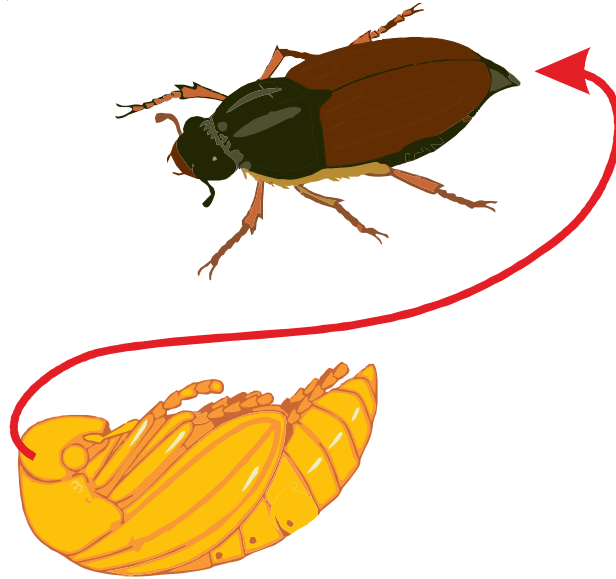


- (a) Write the words 'Cockroach' and 'Grasshopper' to represent the eggs of a cockroach and a grasshopper as shown in the diagrams above.
- (i) Diagram A:                      (ii) Diagram B:
- (b) Based on the diagram, what do a grasshopper nymph and a cockroach nymph feed on ?
- (c) How does laying eggs in the given places as shown in the diagrams increase the chances of survival of the young ?

Your solution here:

**03**

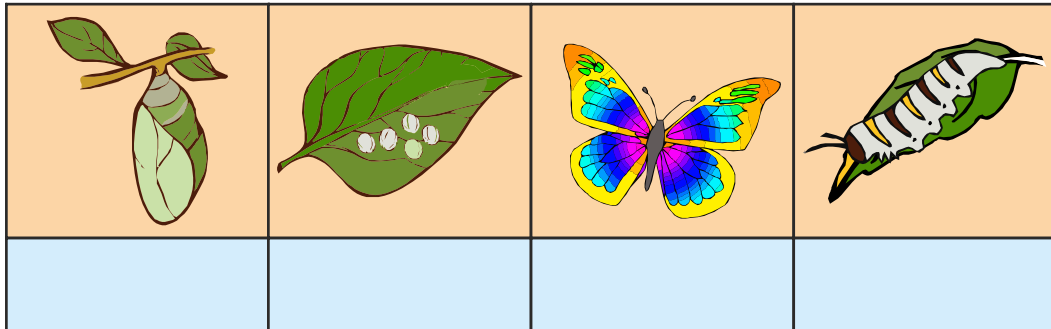
- (a) What is "X" ?
- (b) Name another insect that goes through this process of growth.



Your solution here:

**04**

The diagram below shows the stages of growth of a butterfly.



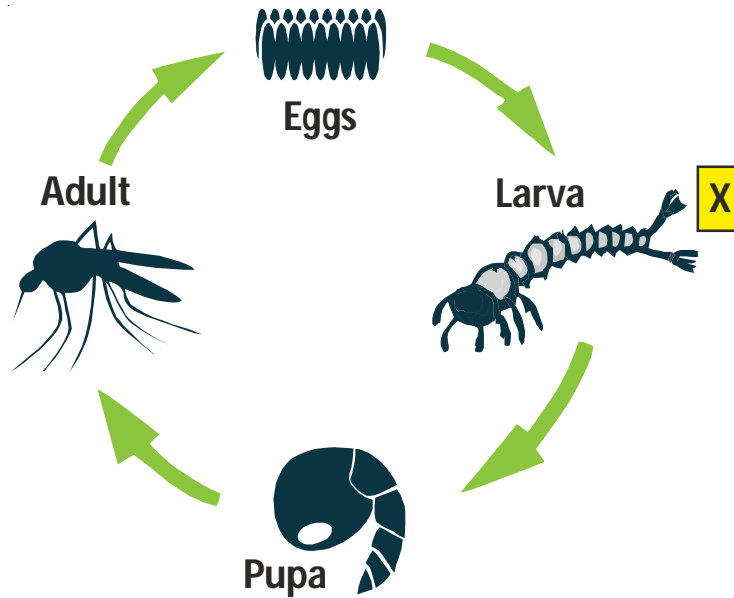
- (a) Label the stages of growth from an egg to an adult butterfly beginning with 1 as the egg stage and 4 as the adult stage.
- (b) Read the given descriptions of two of the stages in the life cycle of a butterfly.

Based on your answer in (a), write the correct stage number in the boxes below.

	Description	Stage
(i)	It does not feed and it remains still as it grows.	
(ii)	It eats voraciously as it grows.	

05

The diagram below shows the life cycle of a mosquito.



- (a) At which stage in the Life cycle of a mosquito is known as a wriggler ?
- (b) Study part X. How is part X useful to the larval stage of a mosquito ?

Your solution here: