






01 Match the following Traffic signals.

The image shows a matching exercise with six traffic signs on the left and six text labels on the right. A pink arrow points from the U-turn sign to the 'U Turn' label.

	No parking
	No Horn
	Rail Road crossing
	U Turn
	Zebra Crossing
	School Ahead

02 _____ is the immediate help given to an injured person. In case of an accident. Identify the items present in the first aid box and fill in the given boxes.



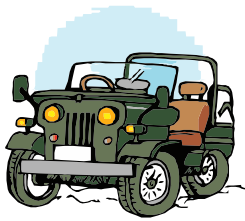
03 Fill in the blanks.

We should be careful while walking in the bathroom when the floor is .



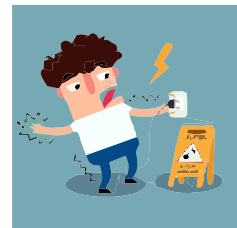
Electricity cannot pass through .

A should be used to sharpen pencils.



Fast moving traffic should be as the .

Never touch electrical appliances if your hands are .



Pedestrians should cross the road only when the signal shows to them.

04 Give one word.

The immediate help given to an injured person.

Balm or lotion that kills germs.

An underground passage on road.

The yellow-traffic light indicates.

Area on road marked with black and white lines.

Path used to walk on road.

The red traffic lights indicates.

The green traffic lights indicates.

05

Write True (T) or False (F) to the given statements.

1. Accidents happen when we are careful.

2. You might cut your finger playing with broken toys.

3. Cross the road only when it is clear.

4. Always keep your hand and head out of a moving bus.

5. We must never panic when someone is hurt.

6. In case of fire, we must hide somewhere.

7. In the playground one should push other kids.

8. An injured person should be given first-aid quickly.

9. In case of bleeding, wash the wound under running water and apply an antiseptic lotion.

10. In case of burns, put the affected area under cool water, put it dry and apply a soothing burn cream.