

01

Match the following Traffic signals.

The image shows a matching exercise with six traffic signs on the left and six text labels on the right, connected by pink arrows. The signs and their corresponding labels are:

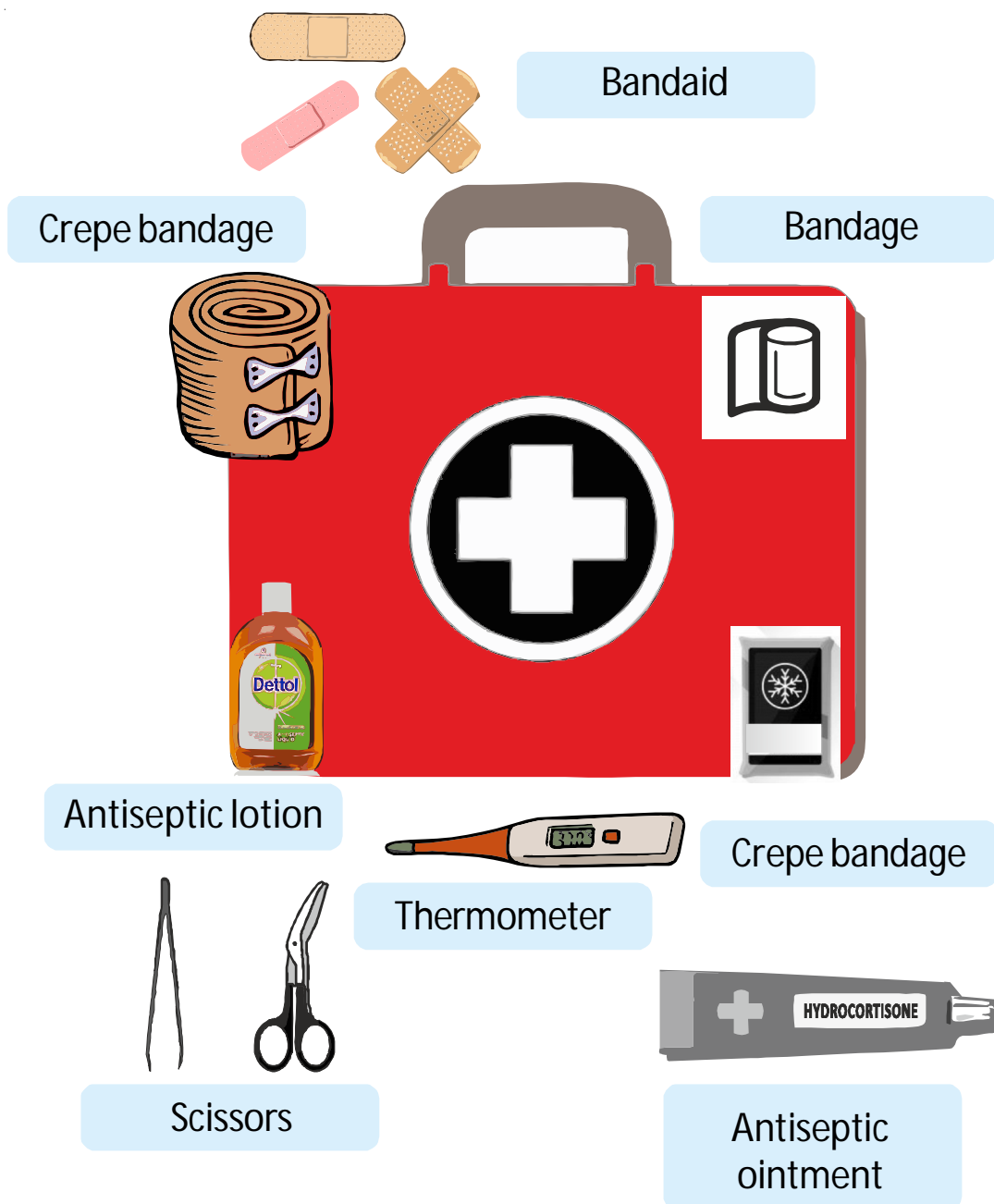
- U Turn** (Orange diamond sign with a black arrow curving 180 degrees)
- No parking** (Red square sign with a white 'P' and a red diagonal slash)
- Zebra Crossing** (Yellow square sign with a black silhouette of a pedestrian crossing)
- School Ahead** (Brown triangular warning sign with a black silhouette of a school building)
- No Horn** (Blue square sign with a black silhouette of a horn and a red diagonal slash)
- Rail Road crossing** (Blue square sign with a black silhouette of a train and a red diagonal slash)

The connections are as follows:

- U Turn sign connects to U Turn label.
- No parking sign connects to No parking label.
- Zebra Crossing sign connects to Zebra Crossing label.
- School Ahead sign connects to School Ahead label.
- No Horn sign connects to No Horn label.
- Rail Road crossing sign connects to Rail Road crossing label.

02

First Aid is the immediate help given to an injured person. In case of an accident. Identify the items present in the first aid box and fill in the given boxes.



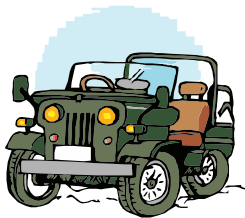
03 Fill in the blanks.

We should be careful while walking in the bathroom when the floor is **wet** .



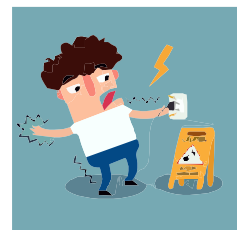
Electricity cannot pass through **Slippers** .

A **Sharpener** should be used to sharpen pencils.



Fast moving traffic should be as the **left** .

Never touch electrical appliances if your hands are **wet** .



Pedestrians should cross the road only when the signal shows **green** to them.

04 Give one word.

The immediate help given to an injured person.

First Aid

Balm or lotion that kills germs.

Antiseptic

An underground passage on road.

Subway

The yellow-traffic light indicates.

Wait and Go

Area on road marked with black and white lines.

Zebra Crossing

Path used to walk on road.

Footpath

The red traffic lights indicates.

To Stop

The green traffic lights indicates.

To Go

05

Write True (T) or False (F) to the given statements.

1. Accidents happen when we are careful. **False**
2. You might cut your finger playing with broken toys. **True**
3. Cross the road only when it is clear. **True**
4. Always keep your hand and head out of a moving bus. **False**
5. We must never panic when someone is hurt. **True**
6. In case of fire, we must hide somewhere. **False**
7. In the playground one should push other kids. **False**
8. An injured person should be given first-aid quickly. **True**
9. In case of bleeding, wash the wound under running water and apply an antiseptic lotion. **True**
10. In case of burns, put the affected area under cool water, put it dry and apply a soothing burn cream. **True**