

01

Four students in a class were discussing about cell. Read it carefully and answer the following questions.

**Ravi** : Mature RBCs cannot carry out cell division.

**Raju** : Animal cells change shapes but plant cell cannot.

**Paul** : During development erythrocytes loose nucleus.

**Jim** : Cellulosed cell walls give rigidity to plant cells.

- i) Whose statements are correct ?
- ii) Who supports whom is answering the statement ? Why ? Give an example.
- iii) What is the shape of RBC's ?
- v) What is cellulose ?

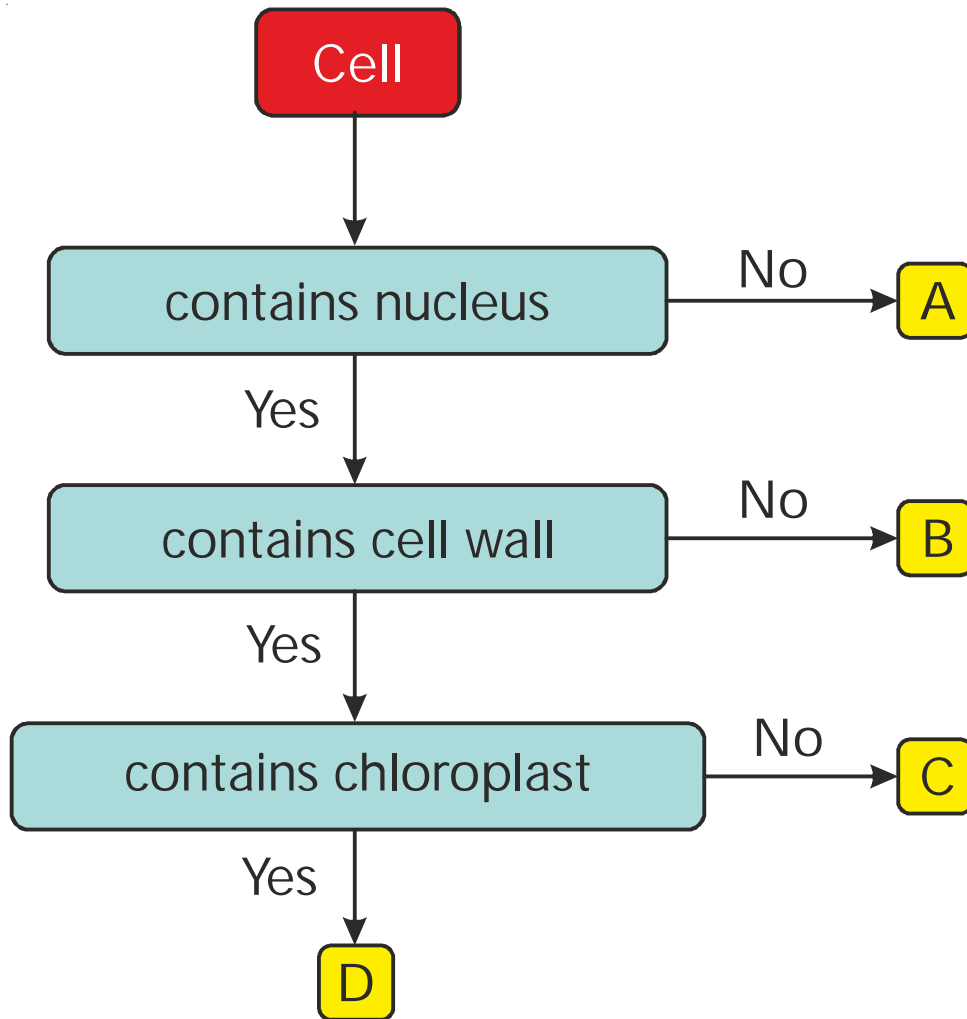
Your solution here:

**02** Complete the table choose the related answers from the following.

Name of the cell	Number of functions
Muscle cell	
Palisade cell	
Root hair cell	
Sensory neurone	
White blood cell	

- I) Absorbs salts and waters from the soil.
- II) Kills bacteria.
- III) Makes food by photosynthesis.
- IV) Carries electrical impulses.
- V) Shortens to bring about movements.

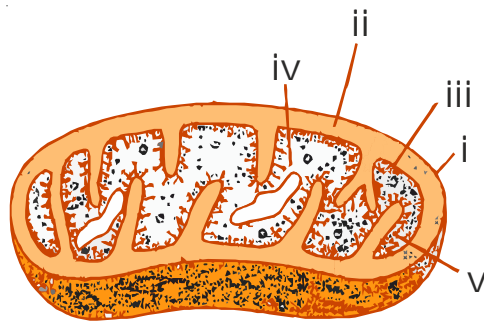
**03** Study the diagram below carefully. Which of the following cells best represents a cell found in the root of a plant ?



Your solution here:

**04**

Identify the structure of an cell organelle given below.  
Answer the following.



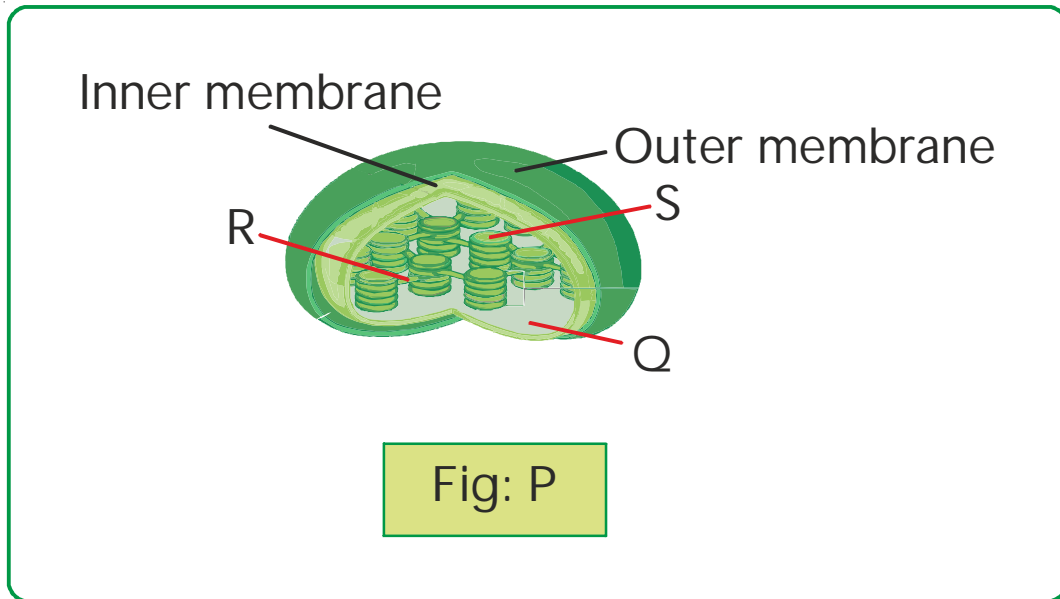
- Label its parts (atleast 5).
- Write in short, any three functions of the organelle shown.
- The organelle shown has a degree of autonomy that makes it quite unlike the other components of cells. Given reasons.
- Identify and label part 'v' shown in the diagram.

Your solution here:

Your solution here:

05

Observe the figure. Identify and Label its parts.



Your solution here: