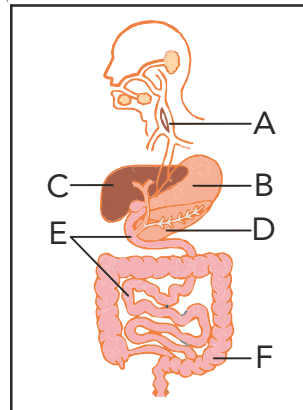


**01**

The diagram below shows the human digestive system. It consists of the alimentary canal and organs attached to the alimentary canal.

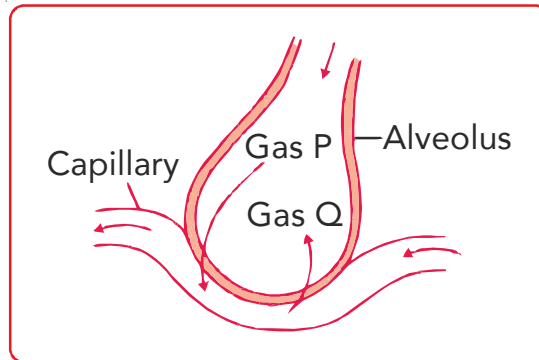


- Identify the organs labelled A to F.
- Which of the organs labelled are accessory organs ?
- State the two main functions of organ E.
- Briefly describe how food is moved along the alimentary canal.

Your solution here:

**02**

The given figure shows the exchange of gases between an alveolus and a capillary.

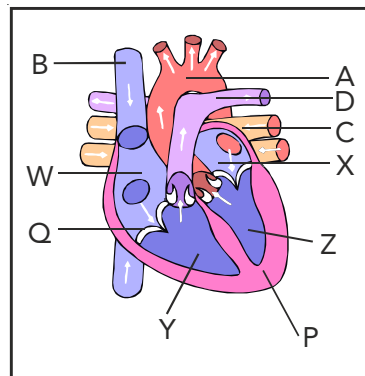


- (i) Based on the figure state gas P and Q.
- (ii) Which blood is oxygenated and deoxygenated blood ?
- (iii) State the process which causes the exchange of gases on the surface of an alveolus.
- (iv) Why must the wall of an alveolus be moist ?

Your solution here:

**03**

The given diagram show a cross-section of the human heart.

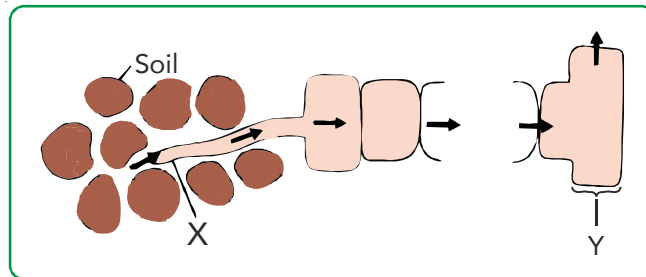


- (a) Which letter represents the blood vessels that carries blood from the heart to:
- (i) the lungs ?
  - (ii) the rest of the body ?
- (b) State the differences in the composition of the blood in W and X.
- (c) What are the names for the parts of the heart labelled W, X, Y and Z ?
- (d) What is the function of the structure labelled Q ?
- (e) Explain why structure P needs to be a thick muscle.

Your solution here:

# 04

The Diagram show part of the root system of a plant. The roots absorb water and mineral salts.

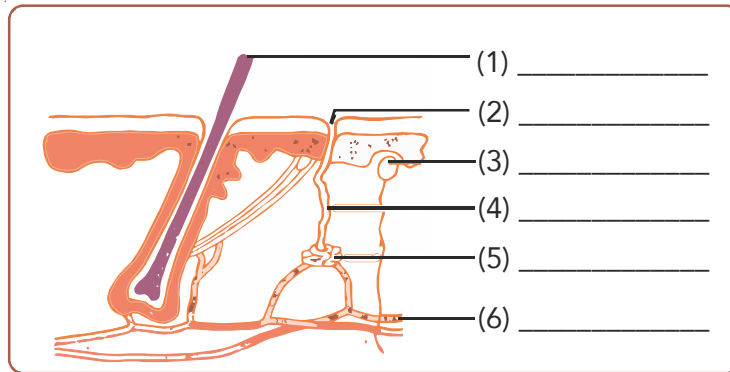


- (a) Name the parts labelled X and Y.
- (b) Explain how water gets into X.
- (c) Explain how water moves from cell to cell, starting from X and on to Y.
- (d) State the process by which dissolved mineral salts are absorbed when their concentration in the soil is:
  - (i) higher than inside the roots.
  - (ii) lower than inside the roots.

Your solution here:

**05**

The given figure shows a cross section of the human skin.



- (a) Label the structures of the skin in the given figure.
- (b) State the waste products found in sweat.
- (c) How is sweat formed ?
- (d) Give two reasons why sweating is important to humans.
- (e) State the waste products excreted by the following organs.

Your solution here: