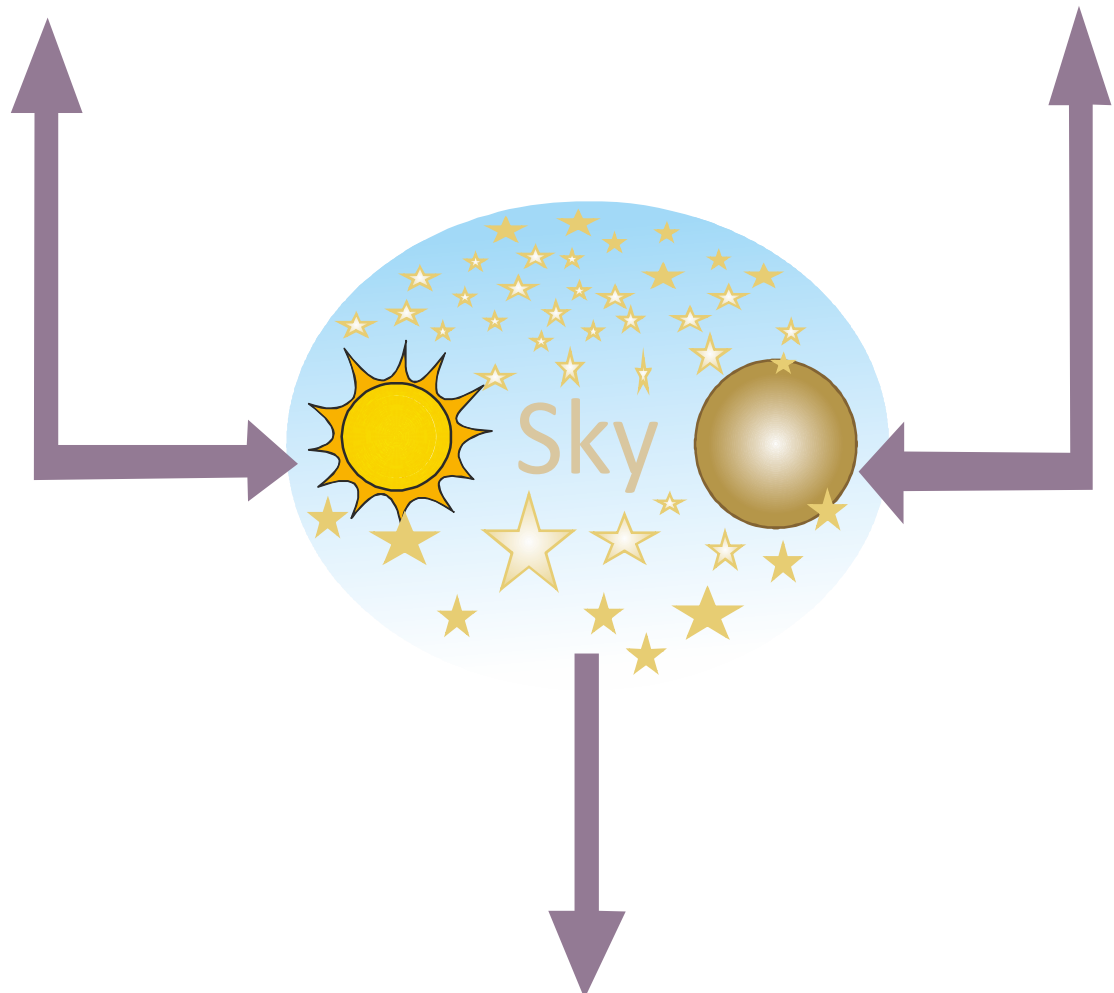


01

We can see the sun or the moon and stars in the sky.

This is a S . It rises in the
E to bring in the day.
It sets in the W to
bring in the night.

This is a M It shines
brightly in the N sky.
It changes its shapes called
P of the moon.



This is a S . It T at
night. They make patterns in the sky.

02

Can you name the colour of the background of these pictures appropriately. You have two choices of colours Blue Black.

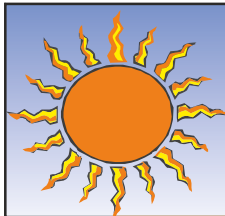
Night sky



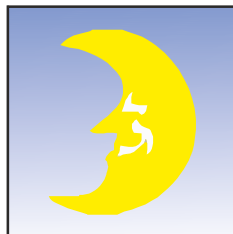
Day sky



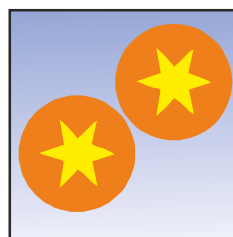
Tick () the correct statement. Cross () the wrong statement.



- (a) I set in the east.
(b) I am a hot ball of fire.



- (a) I shine with my own light.
(b) I appear to change my shape.



- (a) We borrow light from the sun.
(b) We twinkle in the sky at night.

03

Fill in the blanks.

Stars are .



The Sun sets in the .

The Moon is much than the sun.



We can see the stars at .

The Sun rises in the .



04

Give One Word.

The moon that looks like a ball

The moon that looks like a 'C'.

The big white ball that shines
brightly in the night sky.

The red big and hot ball of fire in
the sky that gives us heat and
light.

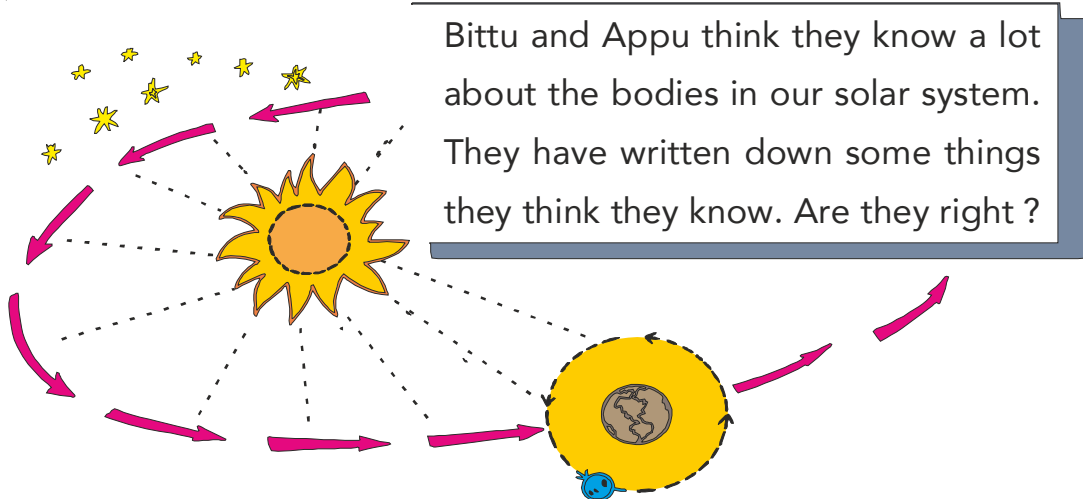
A model of the earth.

Different shapes of the moon in
the night sky.

These forms patterns in
the night sky.

05

There are things out in space called **bodies**. They don't look anything like our bodies. But they are out there, and many of them are moving.



Put **T** next to the correct statements.

Put **F** next to the ones that are not right.

- ____ 1. The Sun is a star.
- ____ 2. The Earth turns every day.
- ____ 3. The Sun travels around the Earth.
- ____ 4. The Earth travels around the Sun.
- ____ 5. The Earth travels around the Moon.
- ____ 6. The Sun is the only star that we can see.
- ____ 7. The Earth is the closest planet to the sun.
- ____ 8. The Earth is the largest planet in its solar system.

