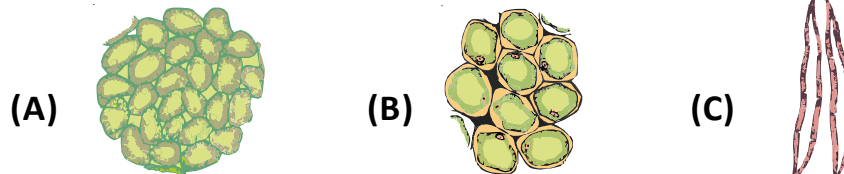


01

Observe the figures given below and answer the following.

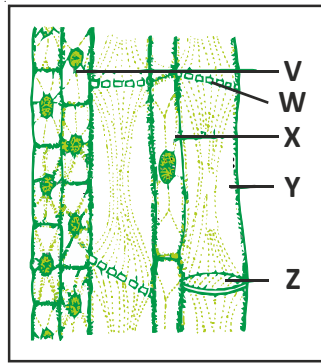


- (a) Identify the type of plant tissues A, B and C shown above. Give reasons for their identification.
- (b) Identify the type of plant tissues and name them for their respective characteristics mentioned below:
- (i) Tissue that is commercially exploited to obtain hemp and jute.
 - (ii) Tissue that provides mechanical strength and elasticity in growing stems.
 - (iii) Tissue that play a vital role in wound healing.

Your solution here:

02

Observe the given figure and answer the following questions.

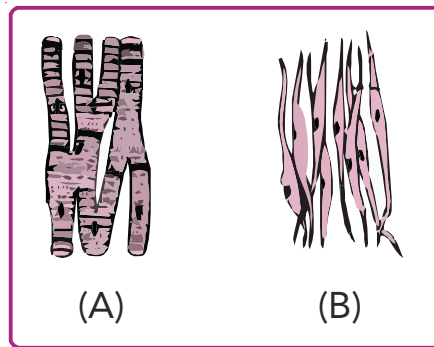


- (a) Identify the type of plant tissue. Label its parts and state its function.
- (b) What is the peculiarity observed with 'Y' ?
- (c) Comment on – cell walls of phloem:

Your solution here:

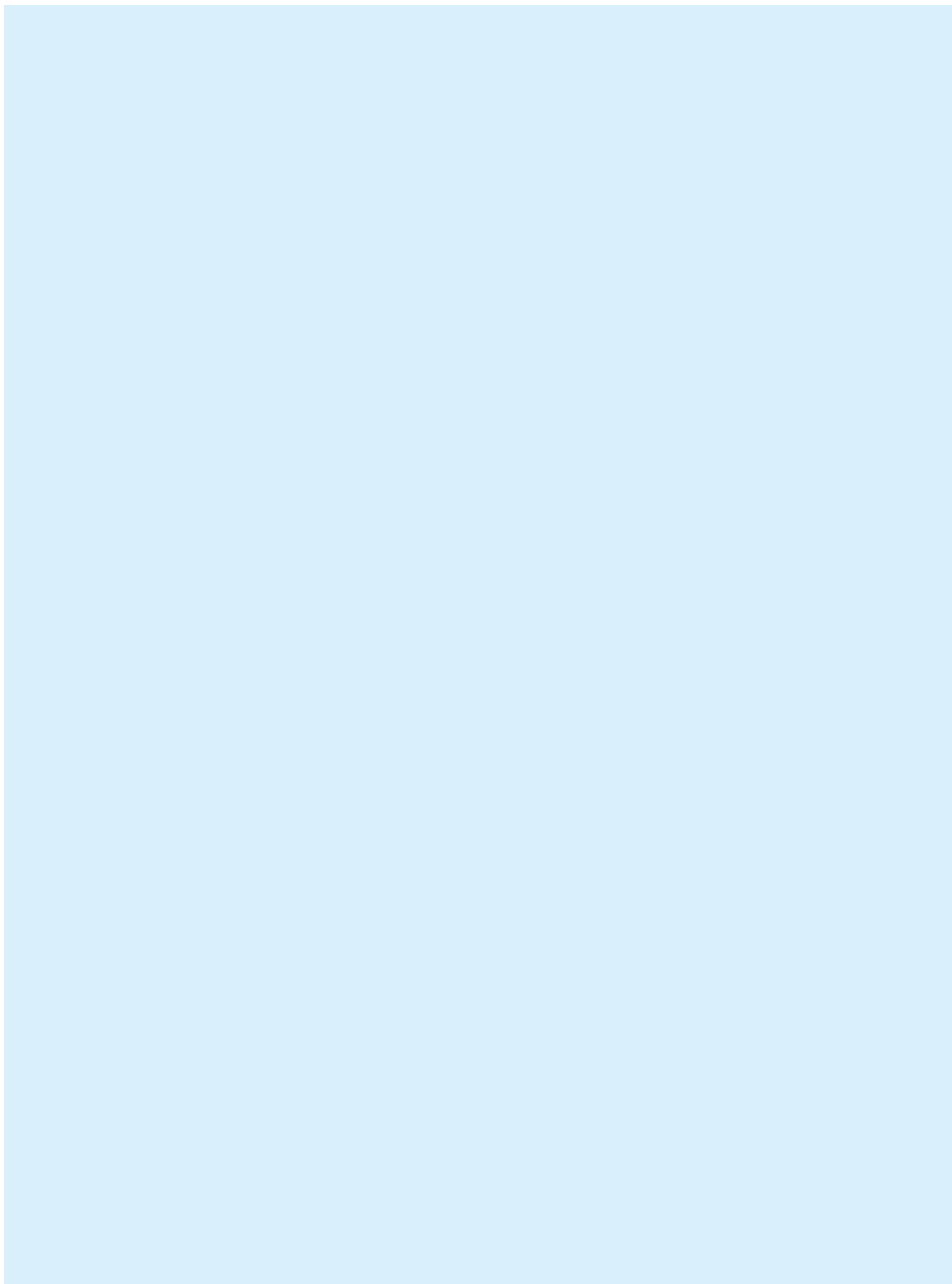
03

Observe the animal tissue 'A' and 'B'. Answer the following questions.



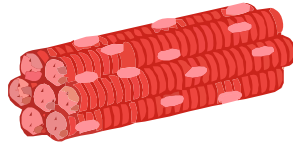
- (a) Identify the types of animals tissues 'A' and 'B'. Given reasons for their identification.
- (b) Identify the types of muscles based on the characteristics mentioned below
 - (i) Striped, voluntary muscles.
 - (ii) Involuntary muscles showing rhythmic contraction.
 - (iii) Muscles that help in pushing food down along the alimentary canal.
- (c) What are myofibrils ?

Your solution here:

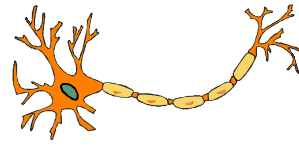


04

Observe the figure and answer the questions given below.



(A)



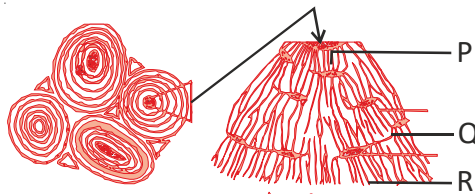
(B)

- (a) Identify the type of animal cell shown.
- (b) Label the parts – P, Q, R, S, T, U, V.
- (c) Why do axon of one neuron and dendrite of another neuron connect in end - to - end manner. What are the connective spots called as ?

Your solution here:

05

Observe the figure and answer the questions given below.



- (a) Identify the type of connective tissue shown. Label the parts - P, Q, R.
- (b) Identify the type of tissue based on the hints given below. Write its functions.
- (i) It is red, in colour.
 - (ii) It is soft and spongy.
 - (iii) It is also known as myeloid tissue.

Your solution here: